



Police Support

A large, diagonal collage of images representing different aspects of police work. The collage includes: a close-up of a police officer's hands holding a rifle; a police officer in a tactical vest and helmet; a police officer in a uniform and hat; a police officer in a tactical vest and helmet; a police officer in a uniform and hat; a police officer in a tactical vest and helmet; a police officer in a uniform and hat; a police officer in a tactical vest and helmet; a police officer in a uniform and hat; a police officer in a tactical vest and helmet. The collage is divided into several sections by diagonal lines, each featuring a different image. The colors of the sections are blue, red, and yellow. The text 'Police Support' is written in a large, bold, blue font on the left side of the image.

Police Support

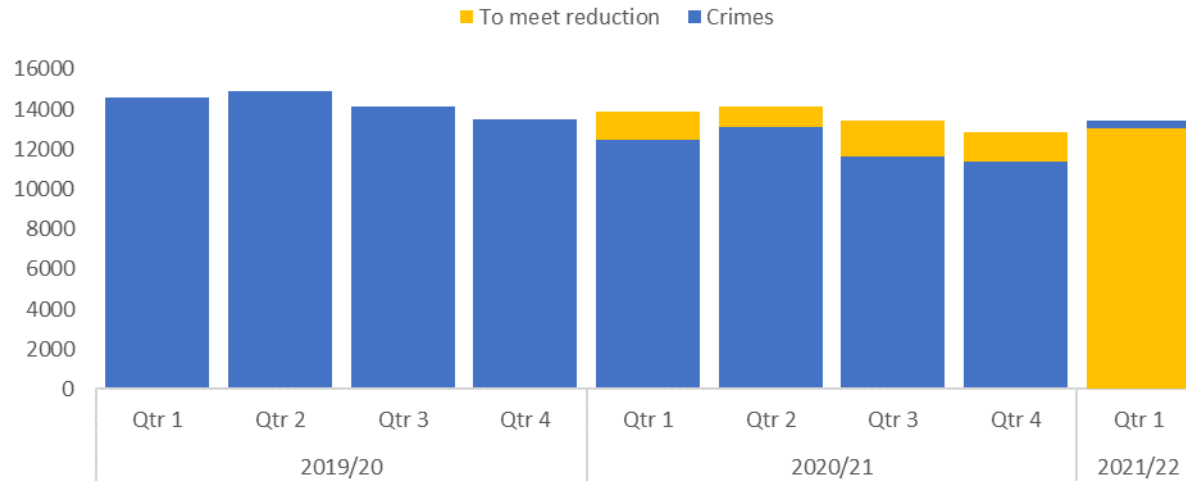
A large, diagonal collage of images representing different aspects of police work. The collage includes: a close-up of a police officer's hands holding a rifle; a police officer in a tactical vest and helmet; a police officer in a uniform and hat; a police officer in a tactical vest and helmet; a police officer in a uniform and hat; a police officer in a tactical vest and helmet; a police officer in a uniform and hat; a police officer in a tactical vest and helmet; a police officer in a uniform and hat; a police officer in a tactical vest and helmet. The collage is divided into several sections by diagonal lines, each featuring a different image. The colors of the sections are blue, red, and yellow. The text 'Police Support' is written in a large, bold, blue font on the left side of the image.

Operational Assessment

1. Crime trend
2. Crime outcomes
3. Repeat Crime victims
4. Residential Burglary
5. Residential Burglary outcomes
6. Public Order Offences
7. Public Order Offences outcomes
8. Violence with and without Injury
9. Violence with and without Injury outcomes
10. Neighbourhood Crime
11. Neighbourhood Crime Outcomes
12. Rape Crime
13. Rape Crime Outcomes
14. Domestic Related Crime
15. Domestic Related Crime outcomes
16. Domestic Related Crime repeat victims
17. Hate Crime
18. Hate Crime Outcomes
19. Modern Day Slavery and Human Trafficking
20. ASB
21. Released Under Investigation
22. Arrest rates
23. Voluntary Attendance
24. Investigation Timeliness

All Crime Trend

Crime Trend (All Crime - 2019/20 to Qtr 1 2021/22)



Quarterly Summary

2019-20				2020-21				2021-22
Qtr 1	Qtr 2	Qtr 3	Qtr 4	Qtr 1	Qtr 2	Qtr 3	Qtr 4	Qtr 1
14596	14878	14119	13512	12442	13089	11647	11362	13424

Qtr 1 (19-20)	Qtr 1 (20-21)	Qtr 1 (21-22)	% change (19-20)	% change (20-21)
14596	12442	13424	-8.0% ↓	7.9% ↑

Key Points

Quarter 1 2021/22 has recorded a 8% decrease in all crime (1,172 fewer offences to 13,424) when compared to quarter 1 2019/20 (Pre-Covid year). Compared to last year, quarter 1 recorded a 7.9% increase. Although included throughout this document, direct comparisons with this year are not practical due to large scale Covid lockdowns across the country.

The crime reduction figure of 5% last year has been increased to 10% for this year (in line with 20% over the course of the Parliament as in the Chief Constables delivery plan).

With this figure in mind, quarter 1 in 2021/22 recorded more crime than expected (an additional 2.1% or 288 crimes).

For quarter 1, Gwent are in a good position being 7th (out of 8) in Most Similar Group of forces (MSG) for crime density (per 1,000 population) and below the MSG average.

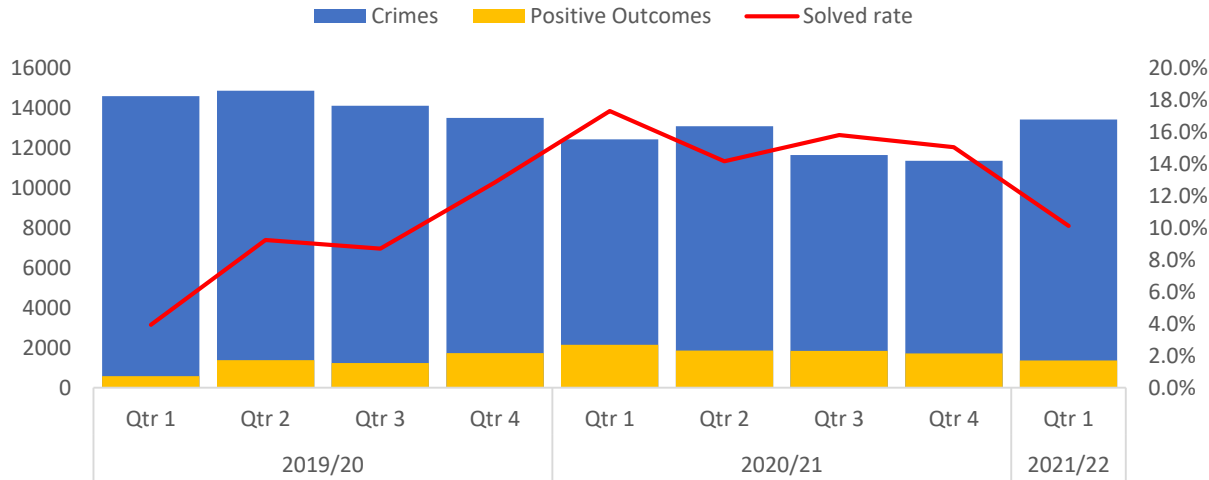
As in the Chief Constable's force delivery plan, it is an ongoing ambition to reduce crime by 5% per year and achieve a 20% reduction in 4 years.

The Deputy Chief Constable has acknowledged Gwent Police are in a good position to achieve this aim but stressed there needs to a continued focus on Crime Data Integrity.

**Based on iQuanta to May 21*

All Crime Outcomes

Positive outcomes (All crime - 2019/20 to Qtr 1 2021/22)



Quarterly Summary

2019-20				2020-21				2021-22
Qtr 1	Qtr 2	Qtr 3	Qtr 4	Qtr 1	Qtr 2	Qtr 3	Qtr 4	Qtr 1
10.6%	12.6%	9.9%	14.1%	18.1%	14.7%	15.9%	15.2%	10.2%

Qtr 1 (19-20)	Qtr 1 (20-21)	Qtr 1 (21-22)	% change (19-20)	% change (20-21)
10.6%	18.1%	10.2%	-0.4% ↓	-7.9% ↓

Key Points

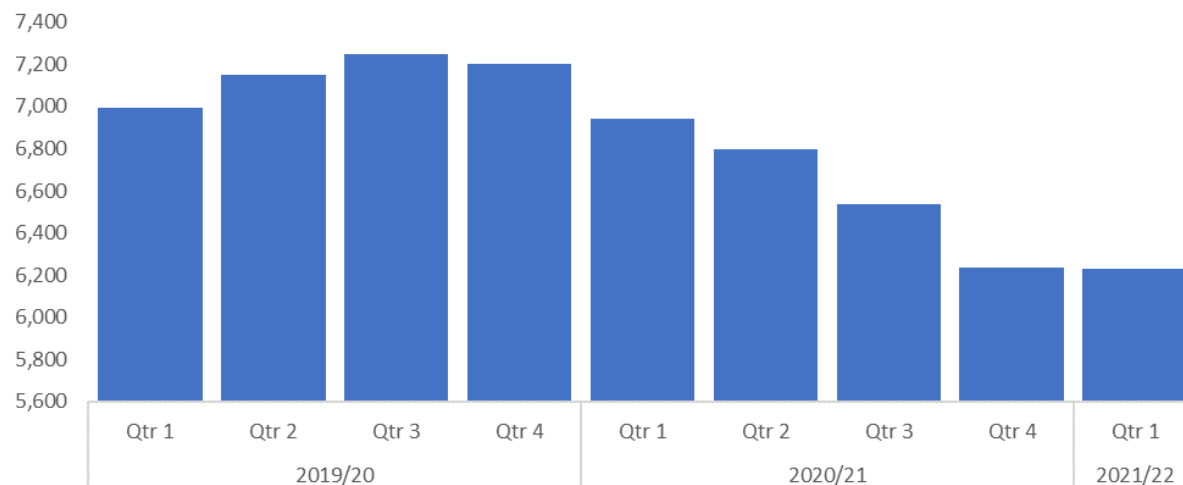
Compared to last quarter, positive outcomes fell by 5 percentage points (to 10.2%). The number of solved outcomes also fell by 351 (to 1,360). This coupled with an increase of crime has resulted in this sharp decrease. A more significant decrease can be observed when comparing quarter one over the last two years. There has been a 7.9 percentage point decrease (796 fewer crimes solved) this quarter when compared to the same period in 2020/21. For quarter 1, Gwent are 5th in the MSG of forces.

Last quarters' report stated it would be challenging to maintain the healthy positive outcome rate established over the course of the last, COVID affected, financial year. There were fewer crimes from the last 12 months to achieve positive outcomes in and there is likely to be an increasing crime trend as COVID restrictions are relaxed.

There continues to be a focus on implementing a speedy approach to processing positive outcomes, reducing the length of investigations to ensure victims remain engaged (see slide 26), enhanced problem solving and improved supervision of investigations.

Repeat Crime Victims

Repeat Crime Victims (2019/20 to Qtr 1 2021/22)



Quarterly Summary

2019-20				2020-21				2021-22
Qtr 1	Qtr 2	Qtr 3	Qtr 4	Qtr 1	Qtr 2	Qtr 3	Qtr 4	Qtr 1
6991	7152	7247	7203	6941	6797	6538	6234	6232

Qtr 1 (19-20)	Qtr 1 (20-21)	Qtr 1 (21-22)	% change (19-20)	% change (20-21)
6991	6941	6232	-10.9% ↓	-10.2% ↓

Key Points

The number of repeat crime victims (those a victims of 2 or more crimes in a 12 month rolling period) has remained stable in quarter one 2021/22 (6232) when comparing to quarter four 2020/21 (6234).

There has been a significant decrease when comparing the same quarter over the last two years (-10.2%).

The number of repeat crime victims is predicted to rise into quarter two due to an increasing crime trend.

From July, victims will be supported by the victim care unit, based in the Connect Gwent victims' hub in Blackwood.

The team, made up of 19 victim care officers, will act as the central point of contact for victims from the point of reporting a crime to the conclusion of the criminal justice process.

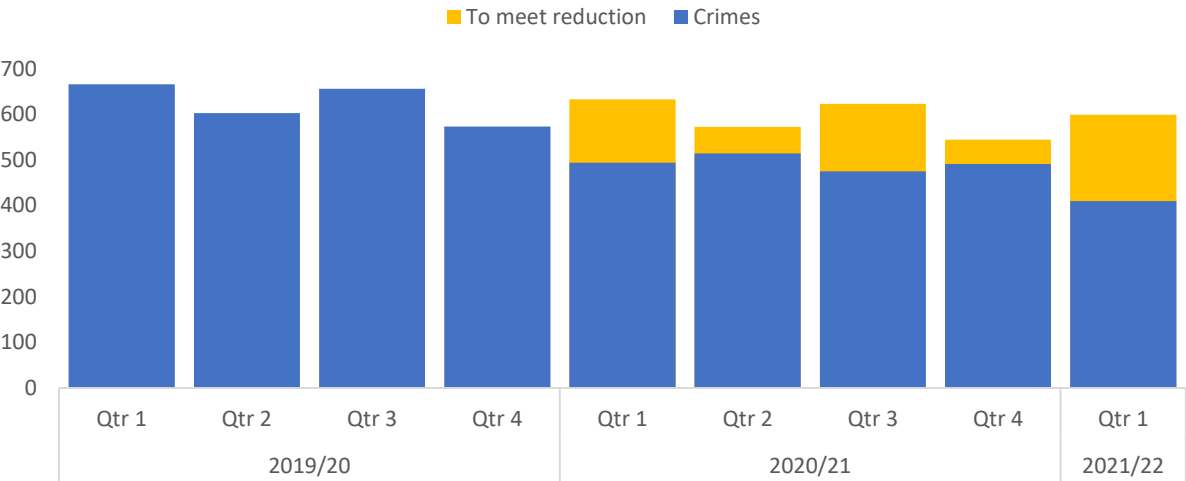
The primary responsibility for victim contact will always be frontline policing, however, the new service will provide additional support to officers and victims.

OICs will still be required to provide their work mobile number and to continue to provide key stage updates of the investigation to victims. There is no longer a need for officers to complete a VCM except for offences out of the VCUs remit.

The victim care officers have all been trained to assess victim's individual needs and offer tailored support. They will be working with partner agencies to refer victims for enhanced support should they need it.

Residential Burglary Crime Trend

Crime Trend (Residential Burglary - 2019/20 to Qtr 1 2021/22)



Quarterly Summary

2019-20				2020-21				2021-22
Qtr 1	Qtr 2	Qtr 3	Qtr 4	Qtr 1	Qtr 2	Qtr 3	Qtr 4	Qtr 1
666	603	656	573	494	514	475	491	410

Qtr 1 (19-20)	Qtr 1 (20-21)	Qtr 1 (21-22)	% change (19-20)	% change (20-21)
666	494	410	-38.4% ↓	-17.0% ↓

Key Points

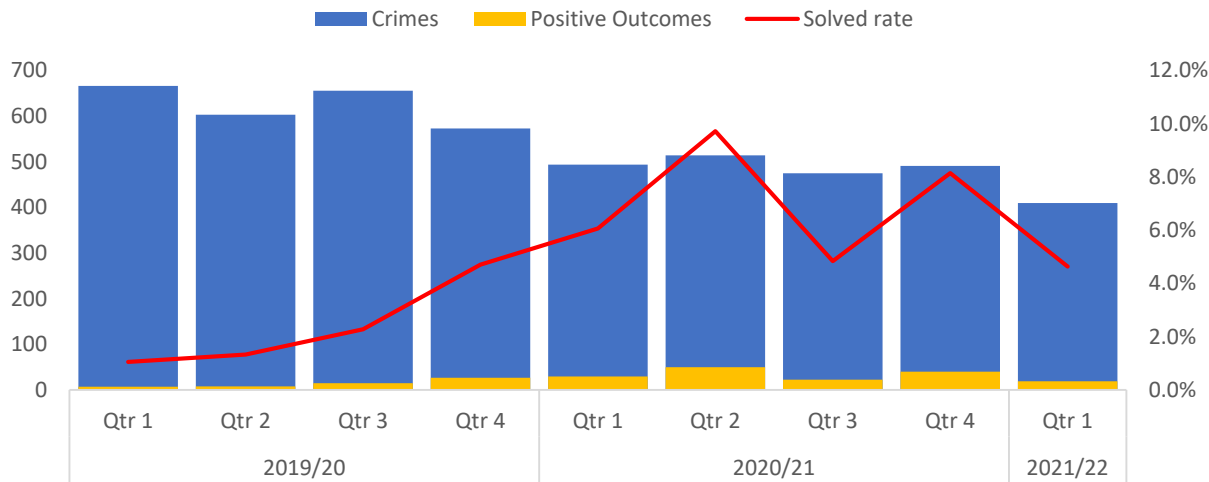
Quarter one 2021/22 has seen a 16.5% decrease in residential burglaries (81 fewer offences to 410) when compared to the previous quarter.

Compared to quarter one in the previous financial year, 2020/21 recorded a 17% reduction (84 fewer crimes).

For quarter 1, Gwent are 4th in MSG (out of 8) in MSG for crime density (per 1,000 households) and below the MSG average.

Residential Burglary Outcomes

Positive outcomes (Residential Burglary - 2019/20 to Qtr 1 2021/22)



Quarterly Summary

2019-20				2020-21				2021-22
Qtr 1	Qtr 2	Qtr 3	Qtr 4	Qtr 1	Qtr 2	Qtr 3	Qtr 4	Qtr 1
5.7%	3.6%	2.9%	5.8%	6.7%	9.9%	4.8%	8.1%	4.6%

Qtr 1 (19-20)	Qtr 1 (20-21)	Qtr 1 (21-22)	% change (19-20)	% change (20-21)
5.7%	6.7%	4.6%	-1.1% ↓	-2.0% ↓

Key Points

Compared to last quarter, positive outcomes fell by 3.5 percentage points (to 4.6%). The number of solved outcomes also fell by 21 (to 19).

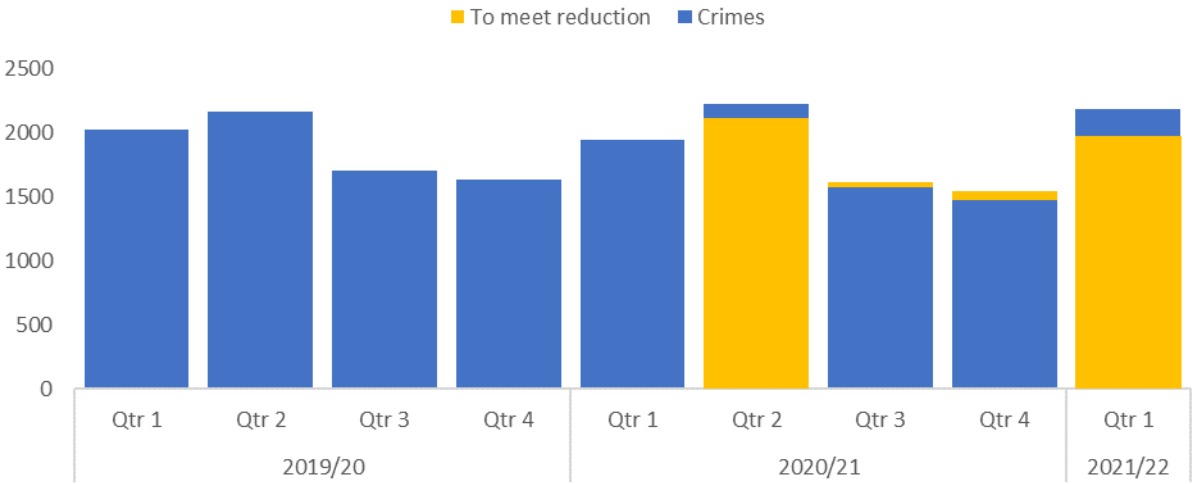
A decrease can also be observed when comparing quarter one over the last two years. There has been a 2.1 percentage point decrease (11 fewer crimes solved) this quarter when compared to the same period in 2020/21.

For quarter 1, Gwent are 5th in the MSG of forces.

There are resources in place to deal with residential burglary. These include the Criminal investigation Department, the ‘We Don’t Buy Crime’ team and problem solving hubs. These are focussed on reducing incidents of crime, in addition to improving outcomes for victims. A review of Crime Scene Investigation attendance at these incidents has been requested.

Public Order Offences Trend

Crime Trend (Public Order Offences - 2019/20 to Qtr 1 2021/22)



Quarterly Summary

2019-20				2020-21				2021-22
Qtr 1	Qtr 2	Qtr 3	Qtr 4	Qtr 1	Qtr 2	Qtr 3	Qtr 4	Qtr 1
2025	2172	1704	1632	1946	2223	1581	1477	2190

Qtr 1 (19-20)	Qtr 1 (20-21)	Qtr 1 (21-22)	% change (19-20)	% change (20-21)
2025	1946	2190	8.1% ↑	12.5% ↑

Key Points

Public Order Offences continue to rise (significantly from last quarter – 713 additional offences, up 48.3%). However, they were below levels usually associated with peak summer months.

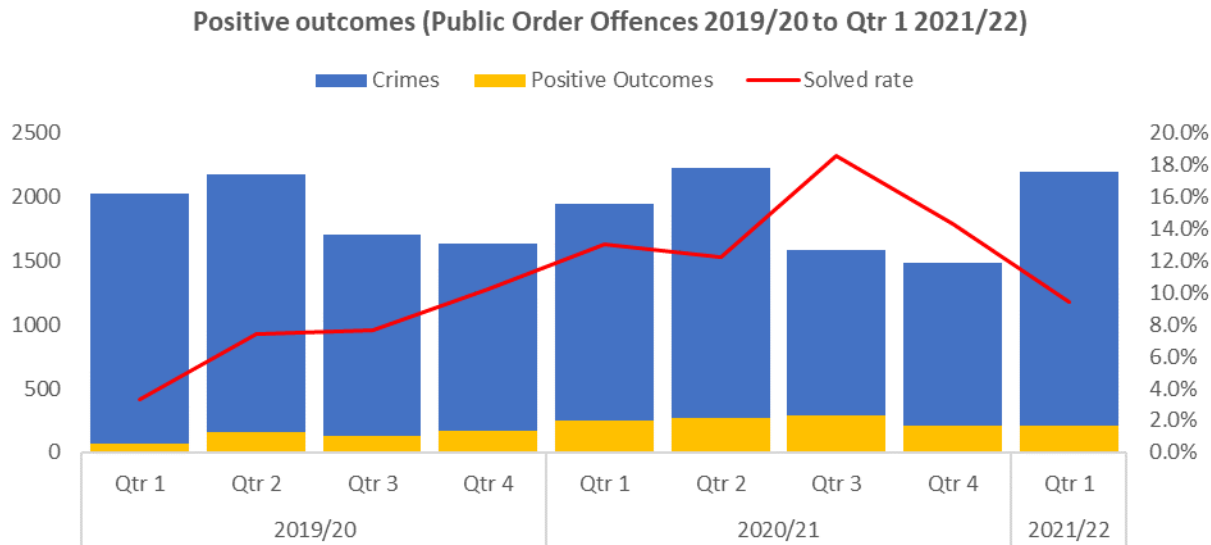
Compared to quarter one of 2019/20, Public Order Offences rose by 8.1% (an additional 165 offences).

Compared to quarter one of 2020/21, Public Order Offences rose by 12.5% (an additional 244 offences).

For quarter 1, Gwent are 2nd (out of 8) in MSG for crime density (per 1,000 population) and above the MSG average.

Despite the rise in these offences, Gwent are working hard to ensure crime data integrity in this area is accurate, ensuring correct recording of crime in this offence type. HMIC have identified that up to a third of Public Order offences have not been recorded in other force areas. Problem solving activity within Neighbourhood teams continues to look to drive down this crime type.

Public Order Outcomes



Quarterly Summary

2019-20				2020-21				2021-22
Qtr 1	Qtr 2	Qtr 3	Qtr 4	Qtr 1	Qtr 2	Qtr 3	Qtr 4	Qtr 1
3.3%	7.4%	7.6%	10.2%	13.1%	12.2%	18.5%	14.3%	9.4%

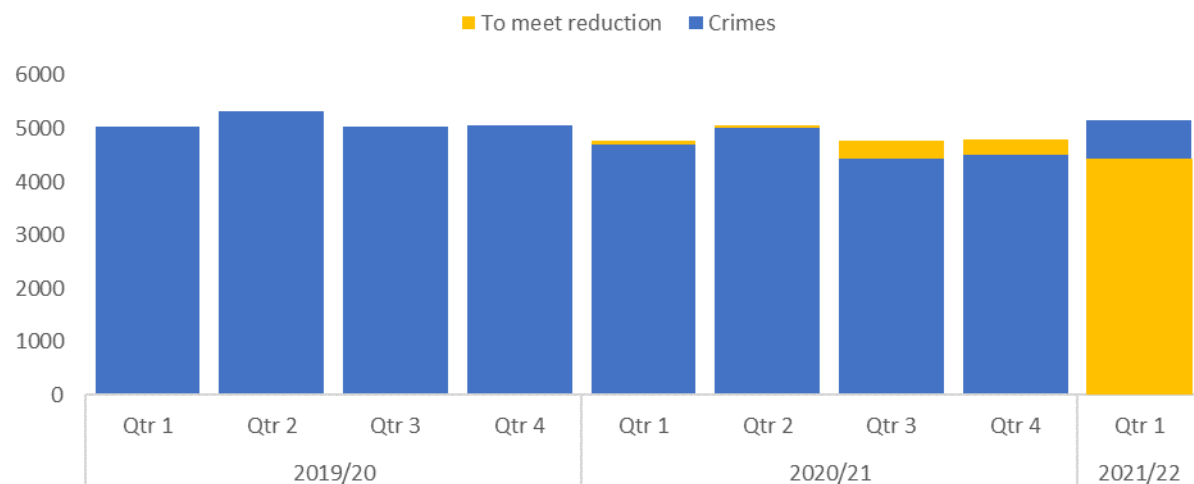
Qtr 1 (19-20)	Qtr 1 (20-21)	Qtr 1 (21-22)	% change (19-20)	% change (20-21)
3.3%	13.1%	9.4%	6.1%	-3.6%

Key Points

- Public Order positive outcomes show a marked decline when compared with those of last year. When compared with the previous quarter, public order positive outcomes fell by 4.9 percentage points – a significant fall.
- When compared with quarter one of 2020/21, positive outcomes have fallen by 3.6 percentage points.
- With this crime type increasing and being one of the most voluminous, there are opportunities to achieve more positive outcomes, especially in the Outcome 8 – Community Resolution field.
- This outcome type has fallen from a high of 98 in quarter three last year to 45 in quarter one of this year.
- For quarter 1, Gwent are 5th in the MSG of forces. There continues to be a focus on implementing a speedy approach to processing positive outcomes, reducing the length of investigations to ensure victims remain engaged, enhanced problem solving and improved supervision of investigations.

Violence with and without Injury Trend

Crime Trend (Violence with and without Injury - 2019/20 to Qtr 1 2021/22)



Quarterly Summary

2019-20				2020-21				2021-22
Qtr 1	Qtr 2	Qtr 3	Qtr 4	Qtr 1	Qtr 2	Qtr 3	Qtr 4	Qtr 1
5022	5318	5032	5055	4702	5020	4429	4500	5142

Qtr 1 (19-20)	Qtr 1 (20-21)	Qtr 1 (21-22)	% change (19-20)	% change (20-21)
5022	4702	5142	2.4% ↑	9.4% ↑

Key Points

Levels of Violence With and Without Injury have increased for Q1 when compared to the previous quarters. An increase of 642 offences +14.3% when compared to 2020-21 Q4.

Compared to quarter one of 2019/20, Violence With and Without Injury Offences rose by 2.4% (an additional 120 offences).

Compared to quarter one of 2020/21, Violence With and Without Injury Offences rose by 9.4% (an additional 440 offences).

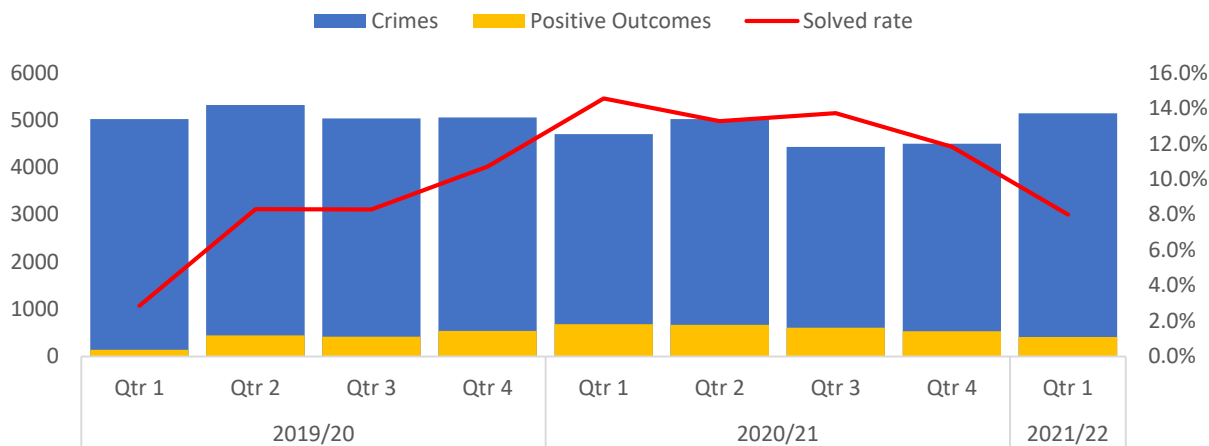
For Violence with Injury, Gwent are 6th (out of 8) in MSG for crime density (per 1,000 population) and below the MSG average.

For Violence without Injury, Gwent are 7th (out of 8) in MSG for crime density (per 1,000 population) and below the MSG average.

ACC Roberts is developing a force action plan for violent crime and a bid for 'Safer Streets' funding has been made to the Home office to help tackle it.

Violence with and without Injury Outcomes

Positive outcomes (Violence with and without Injury- 2019/20 to Qtr 1 2021/22)



Quarterly Summary

2019-20				2020-21				2021-22
Qtr 1	Qtr 2	Qtr 3	Qtr 4	Qtr 1	Qtr 2	Qtr 3	Qtr 4	Qtr 1
9.6%	11.9%	9.3%	11.4%	15.1%	14.1%	13.8%	11.9%	8.1%

Qtr 1 (19-20)	Qtr 1 (20-21)	Qtr 1 (21-22)	% change (19-20)	% change (20-21)
9.6%	15.1%	8.1%	-1.5% ↓	-7.0% ↓

Key Points

A decrease can be observed in Violence With and Without Injury Outcomes since 2020/21 Q3.

When compared to the previous quarter outcomes have fallen by 3.8 percentage points (to 8.1%).

A decrease can also be observed when comparing quarter one over the last two years. There has been a 7.0 percentage point decrease this quarter when compared to the same period in 2020/21 which is a significant decrease.

A 1.5 percentage point decrease when compared to the same period in 2019/20.

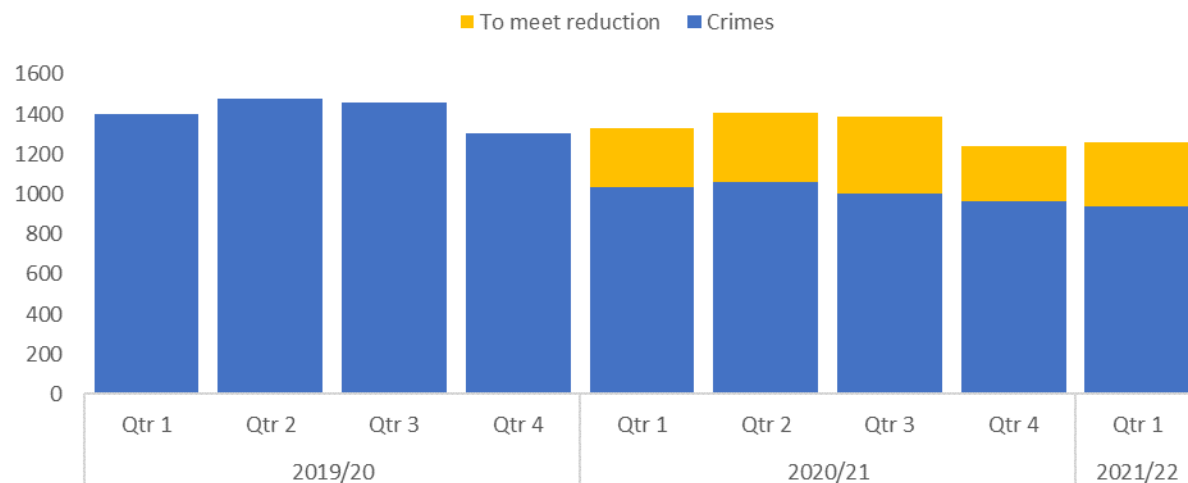
For Violence with Injury solved rate during quarter 1, Gwent are sixth in the MSG.

For Violence without Injury solved rate during quarter 1, Gwent are sixth in the MSG.

Alongside actions mentioned previously in this report, a clear assurance plan is in place to ensure none of these offences become statute barred (unable to prosecute due to the time elapsed).

Neighbourhood Crime Trend

Crime Trend (Neighbourhood Crime - 2019/20 to Qtr 1 2021/22)



Quarterly Summary

2019-20				2020-21				2021-22
Qtr 1	Qtr 2	Qtr 3	Qtr 4	Qtr 1	Qtr 2	Qtr 3	Qtr 4	Qtr 1
1401	1477	1458	1305	1032	1058	1002	963	941

Qtr 1 (19-20)	Qtr 1 (20-21)	Qtr 1 (21-22)	% change (19-20)	% change (20-21)
1401	1032	941	-32.8% ↓	-8.8% ↓

Key Points

Neighbourhood crime has seen a downward trend since Quarter 2, 2019/20 with the current quarter recording the least amount of crimes (536 fewer offences to 941).

Comparing the current quarter to Q1 2020-21 there is a reduction of 8.8% (91 fewer offences) but the bigger reduction can be seen when compared to Q1 of 2019/20 where there is a decrease of 32.8% (460 fewer offences).

For Vehicle crime, Gwent are 6th (out of 8) in MSG for crime density (per 1,000 population) and below the MSG average.

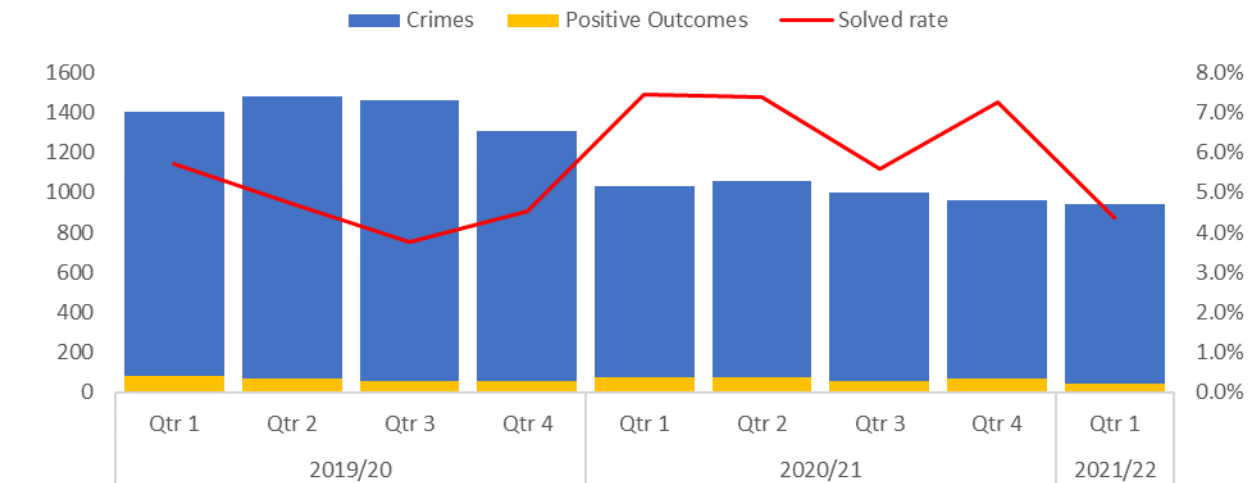
For Personal Robbery, Gwent are 5th (out of 8) in MSG for crime density (per 1,000 population) and below the MSG average.

For Residential Burglary, Gwent are 4th in MSG (out of 8) in MSG for crime density (per 1,000 households) and below the MSG average.

The 'We Don't Buy Crime' team are utilising Safer Streets funding that was obtained from the Home Office. Tactics include providing covert equipment to deploy in high crime areas, which will reduce the potential for new and repeat victims in these crime type areas.

Neighbourhood Crime Outcomes

Positive outcomes (Neighbourhood Crime 2019/20 to Qtr 1 2021/22)



Quarterly Summary

2019-20				2020-21				2021-22
Qtr 1	Qtr 2	Qtr 3	Qtr 4	Qtr 1	Qtr 2	Qtr 3	Qtr 4	Qtr 1
5.7%	4.7%	3.8%	4.5%	7.5%	7.4%	5.6%	7.3%	4.4%

Qtr 1 (19-20)	Qtr 1 (20-21)	Qtr 1 (21-22)	% change (19-20)	% change (20-21)
5.7%	7.5%	4.4%	-1.4% <div></div>	-3.1% <div></div>

Key Points

Alongside (and related to) the reduction in neighbourhood crime, outcomes have declined when compared to the previous quarter from 7.3% to 4.4% (2.9 percentage point decrease).

When compared to Quarter 1 2019/20, positive outcomes have fallen by 1.4 percentage points.

Positive outcomes have reduced by 3.1% when compared to Quarter 1 2020/21.

For vehicle crime during quarter 1, Gwent are 8th in the MSG.

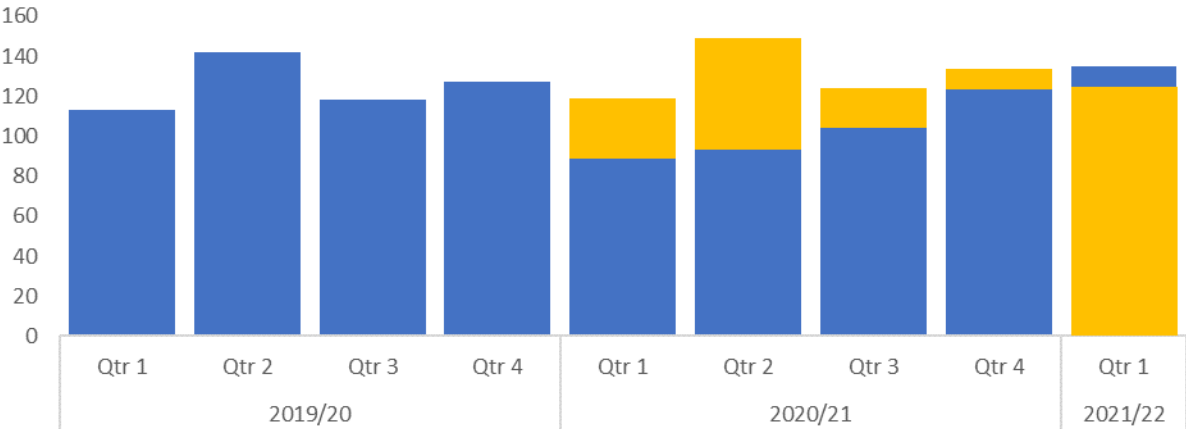
For personal robbery during quarter 1, Gwent are 5th in the MSG.

There continues to be a focus on implementing a speedy approach to processing positive outcomes, reducing the length of investigations to ensure victims remain engaged (see slide 26), enhanced problem solving and improved supervision of investigations.

Rape Crime Trend

Crime Trend (Rape- 2019/20 to Qtr 1 2021/22)

To meet increase Crimes



Quarterly Summary

2019-20				2020-21				2021-22
Qtr 1	Qtr 2	Qtr 3	Qtr 4	Qtr 1	Qtr 2	Qtr 3	Qtr 4	Qtr 1
113	142	118	127	89	93	104	123	135

Qtr 1 (19-20)	Qtr 1 (20-21)	Qtr 1 (21-22)	% change (19-20)	% change (20-21)
113	89	135	19.5% ↑	51.7% ↑

Key Points

Rape offences have seen an upward trend since 2019/20. The current month has reported the highest level since Q2 2019/20. The force recognises it needs to increase reporting of rape crime by encouraging victims to report it.

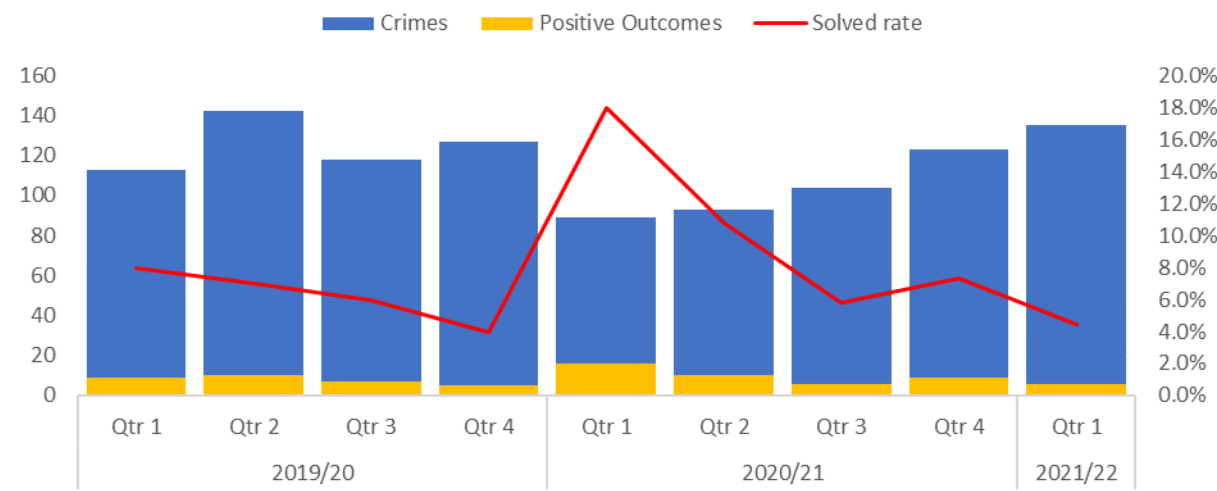
Compared to quarter one of 2019/20, Rape Offences rose by 19.5% (an additional 22 offences).

Compared to quarter one of 2020/21, Rape Offences rose by a significant 51.7% (an additional 46 offences).

For quarter 1, Gwent are 8th in MSG for crime density (per 1,000 population) and below the MSG average.

Rape Crime Outcomes

Positive outcomes (Rape Crime 2019/20 to Qtr 1 2021/22)



Quarterly Summary

2019-20				2020-21				2021-22
Qtr 1	Qtr 2	Qtr 3	Qtr 4	Qtr 1	Qtr 2	Qtr 3	Qtr 4	Qtr 1
8.0%	7.0%	5.9%	3.9%	18.0%	10.8%	5.8%	7.3%	4.4%

Qtr 1 (19-20)	Qtr 1 (20-21)	Qtr 1 (21-22)	% change (19-20)	% change (20-21)
8.0%	18.0%	4.4%	-3.5% ↓	-13.5% ↓

Key Points

Rape Outcomes have seen a significant decrease since Q1 2020/21 where outcomes peaked at 18%.

When compared to Q1 2019/20 Rape Outcomes have fallen by 3.5 percentage points.

When compared to Q1 2020/21 Rape Outcomes have fallen by 13.5 percentage points which is a significant reduction.

For quarter 1, Gwent have the 3rd best solved rate in MSG.

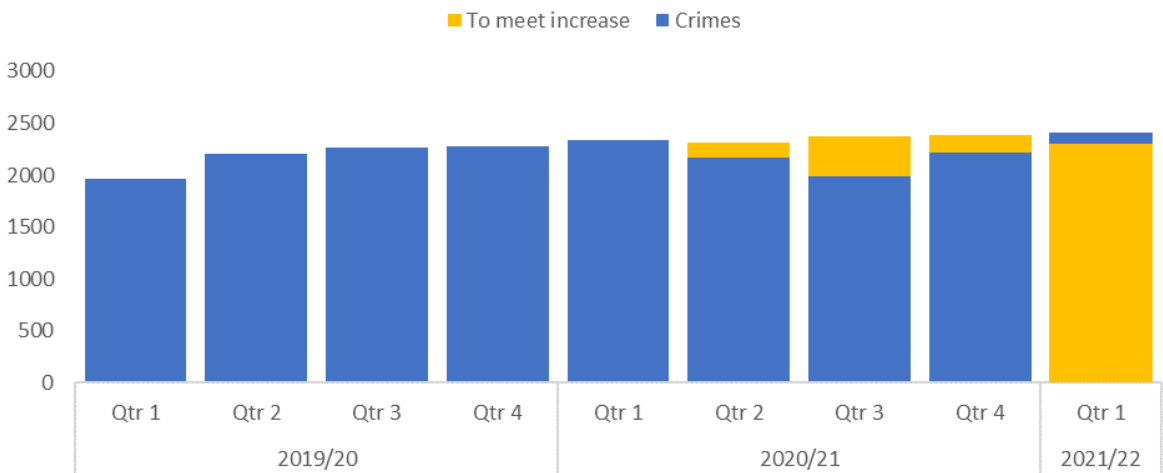
The increase in reported rapes is being monitored through a Rape Action plan and a rape profile has been compiled to identify themes.

Falling outcome rates have been identified as a national issue, however Gwent outcomes are good when a court cases arises. It has been identified that historic cases may have evidential difficulties.

The force rape action plan is in place to increase reporting and ensure there is appropriate support for victims.

Domestic Related Crime Trend

Crime Trend (Domestic Related Crime - 2019/20 to Qtr 1 2021/22)



Quarterly Summary

2019-20				2020-21				2021-22
Qtr 1	Qtr 2	Qtr 3	Qtr 4	Qtr 1	Qtr 2	Qtr 3	Qtr 4	Qtr 1
1958	2202	2264	2273	2336	2173	1991	2213	2304

Qtr 1 (19-20)	Qtr 1 (20-21)	Qtr 1 (21-22)	% change (19-20)	% change (20-21)
1958	2336	2304	17.7%	-1.4%

Key Points

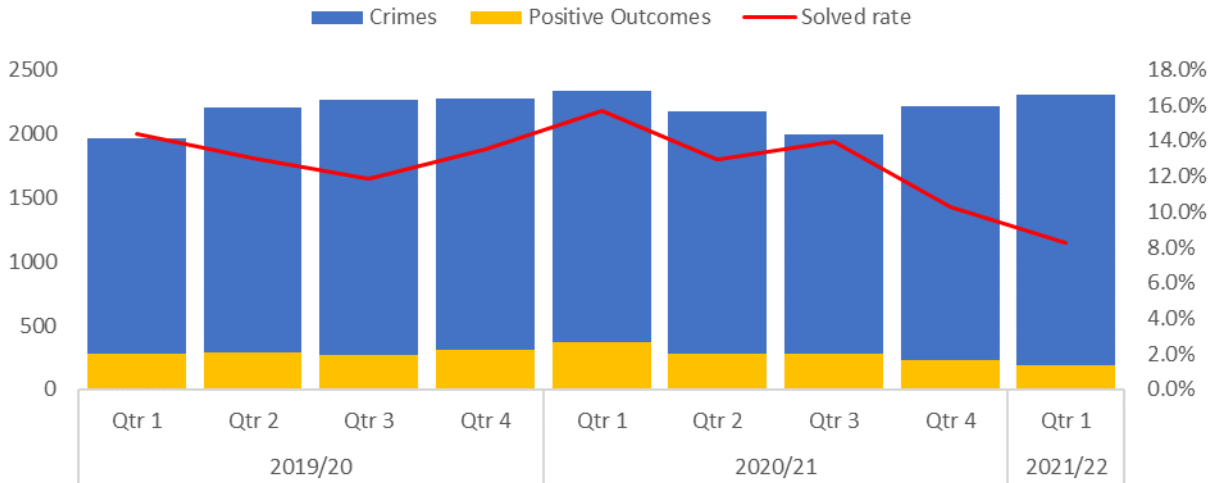
Quarter one of 2021/22 recorded a small rise on the previous quarter (up 4.1%, an increase of 91 offences) and a more significant rise on quarter one 2019/20 (up 17.7%, an increase of 346). The force recognises it needs to increase reporting of domestic abuse crime.

Domestic related crime did show a marginal reduction when compared to quarter one of 2020/21 (down 1.4%, a reduction of 32 offences). It is important to note that the first Covid lockdown had a significant impact on the reporting of domestic crime with levels rising sharply during that period.

There has been a key focus on domestic crimes, particularly stalking & harassment, which shows Gwent going in right direction to drive confidence for victims to report incidents.

Domestic Related Crime Outcomes

Positive outcomes (Domestic Related Crime 2019/20 to Qtr 1 2021/22)



Quarterly Summary

2019-20				2020-21				2021-22
Qtr 1	Qtr 2	Qtr 3	Qtr 4	Qtr 1	Qtr 2	Qtr 3	Qtr 4	Qtr 1
14.4%	13.0%	11.8%	13.5%	15.7%	12.9%	13.9%	10.3%	8.2%

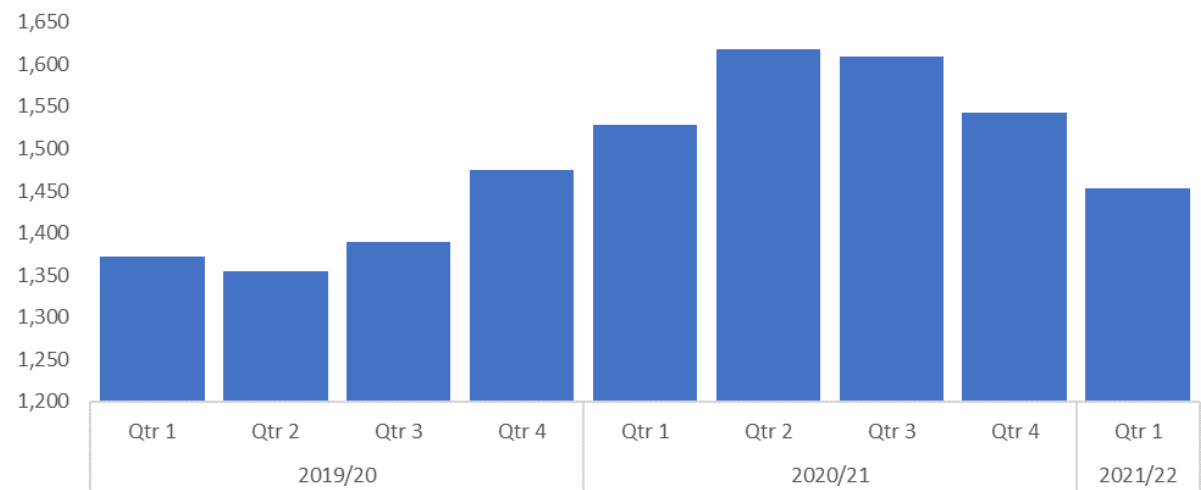
Qtr 1 (19-20)	Qtr 1 (20-21)	Qtr 1 (21-22)	% change (19-20)	% change (20-21)
14.4%	15.7%	8.2%	-6.1%	-7.5%

Key Points

- Domestic related crime positive outcomes (as with many other outcomes) has fallen in quarter one of 2021/22 when compared with previous periods.
- When compared to last quarter, positive outcomes fell by 2.1 percentage points.
- When compared to quarter one of 2019/20, positive outcomes fell by 6.1 percentage points.
- When compared to quarter one of 2020/21, positive outcomes fell by 7.5 percentage points.

Repeat Domestic Crime Victims

Repeat Domestic Crime Victims (2019/20 to Qtr 1 2021/22)



Quarterly Summary

2019-20				2020-21				2021-22
Qtr 1	Qtr 2	Qtr 3	Qtr 4	Qtr 1	Qtr 2	Qtr 3	Qtr 4	Qtr 1
1372	1354	1389	1475	1528	1617	1609	1542	1453

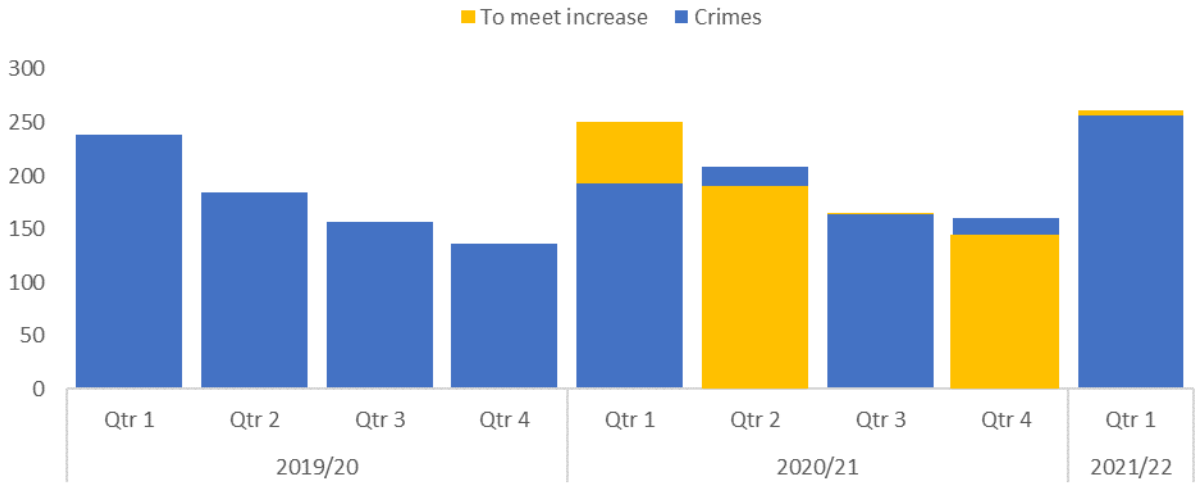
Qtr 1 (19-20)	Qtr 1 (20-21)	Qtr 1 (21-22)	% change (19-20)	% change (20-21)
1372	1528	1453	5.9%	-4.9%

Key Points

- The amount of repeat domestic crime victims (based on rolling 12 months) has varied in quarter one when compared with previous periods.
- The force aim is to reduce the number of repeat victims of domestic abuse.
- Compared to last quarter, there were 89 fewer repeat victims (a fall of 5.7%).
- Compared to quarter one of 2019/20, there were 81 more victims (an increase of 5.9%).
- Compared to quarter one of 2020/21, there were 75 less repeat victims (a fall of 4.9%).

Hate Crime Trend

Crime Trend (Hate Crime - 2019/20 to Qtr 1 2021/22)



Quarterly Summary

2019-20				2020-21				2021-22
Qtr 1	Qtr 2	Qtr 3	Qtr 4	Qtr 1	Qtr 2	Qtr 3	Qtr 4	Qtr 1
238	184	157	136	193	208	164	160	256

Qtr 1 (19-20)	Qtr 1 (20-21)	Qtr 1 (21-22)	% change (19-20)	% change (20-21)
238	193	256	7.6% ↑	32.6% ↑

Key Points

The force recognises it needs to increase reporting of hate crime.

The amount of hate crime increased significantly in quarter one of 2021/22 when compared to previous periods.

When compared to the previous quarter, hate crime increased by 60% (an additional 96 offences).

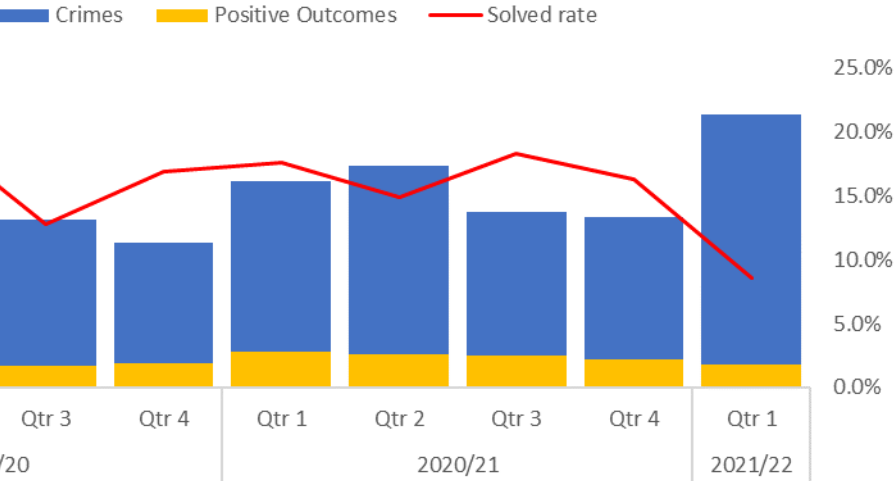
When compared to quarter one of 2019/20, hate crime increased by 7.6% (an additional 18 offences).

When compared to quarter one of 2020/21, hate crime increased by 32.6% (an additional 63 offences).

The increase in hate crime coincided with Welsh Government social justice campaigns and high profile sporting events.

Hate Crime Outcomes

Positive outcomes (Hate Crime 2019/20 to Qtr 1 2021/22)



Quarterly Summary

2019-20				2020-21				2021-22
Qtr 1	Qtr 2	Qtr 3	Qtr 4	Qtr 1	Qtr 2	Qtr 3	Qtr 4	Qtr 1
14.4%	13.0%	11.8%	13.5%	15.7%	12.9%	13.9%	10.3%	8.2%

Qtr 1 (19-20)	Qtr 1 (20-21)	Qtr 1 (21-22)	% change (19-20)	% change (20-21)
14.4%	15.7%	8.2%	-6.1%	-7.5%

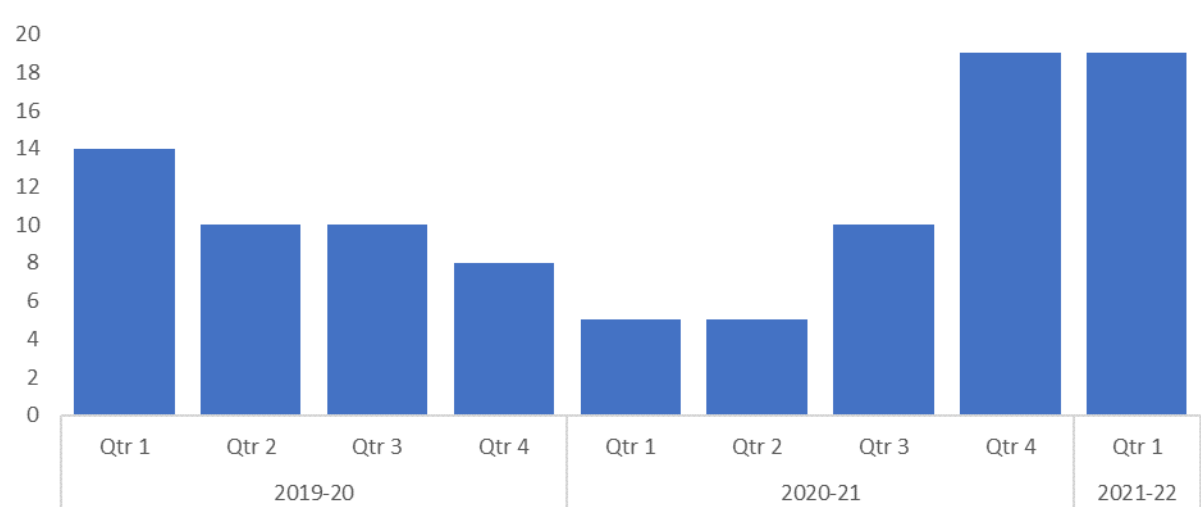
Key Points

As with many outcomes, hate crime positive outcomes fell in quarter one of 2021/22. Compared to the previous quarter, positive outcomes fell by 2.1 percentage points. Compared to quarter one of 2019/20, positive outcomes fell by 6.1 percentage points.

Compared to quarter one of 2020/21, positive outcomes fell by 7.5 percentage points.

Modern Day Slavery and Human Trafficking

Modern Day Slavery and Human Trafficking Crimes (2019/20 to Qtr 1 2021/22)



Quarterly Summary

2019-20				2020-21				2021-22
Qtr 1	Qtr 2	Qtr 3	Qtr 4	Qtr 1	Qtr 2	Qtr 3	Qtr 4	Qtr 1
14	10	10	8	5	5	10	19	19

Qtr 1 (19-20)	Qtr 1 (20-21)	Qtr 1 (21-22)	% change	% change
14	5	19	35.7% ↑	280.0% ↑

Key Points

The number of Modern Day Slavery and Human Trafficking crimes recorded have remained the same in the last two quarters (19 crimes).

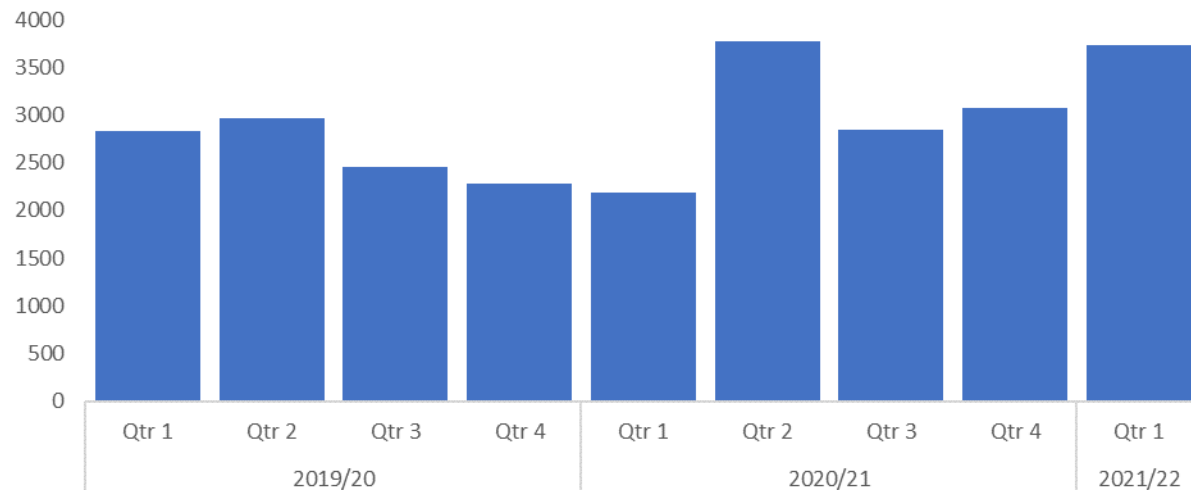
Quarter one of 2021/22 have recorded increased levels of crime when compared with the same quarter in 2019/20 (up 35.7%, 5 additional crimes).

When compared to quarter one of last year, crimes rose by 280% (14 additional crimes). This is believed related to the first Covid lockdown of 2020 when many businesses that could exploit potential victims of modern day slavery and human trafficking were closed and unable to operate as usual.

The force is working with the National Crime Agency to enable it to better understand the emerging issue of human trafficking from Eastern Europe.

Anti-Social Behaviour (ASB) Trend

ASB Trend (Non-Covid- 2019/20 to Qtr 1 2021/22)



Quarterly Summary

2019-20				2020-21				2021-22
Qtr 1	Qtr 2	Qtr 3	Qtr 4	Qtr 1	Qtr 2	Qtr 3	Qtr 4	Qtr 1
2827	2967	2455	2276	2185	3779	2841	3071	3739

Qtr 1 (19-20)	Qtr 1 (20-21)	Qtr 1 (21-22)	% change (19-20)	% change (20-21)
2827	2185	3739	32.3% ↑	71.1% ↑

Key Points

The amount of anti-social behaviour in Gwent has risen significantly in quarter one of 2021/22 when compared to previous periods. When compared to the previous quarter, ASB rose by 21.8% (an additional 668 incidents).

When compared to quarter one of 2019/20, ASB rose by 32.3% (an additional 912 incidents). When compared to quarter one of 2020/21, ASB rose by 71.1% (an additional 1,554 incidents) .

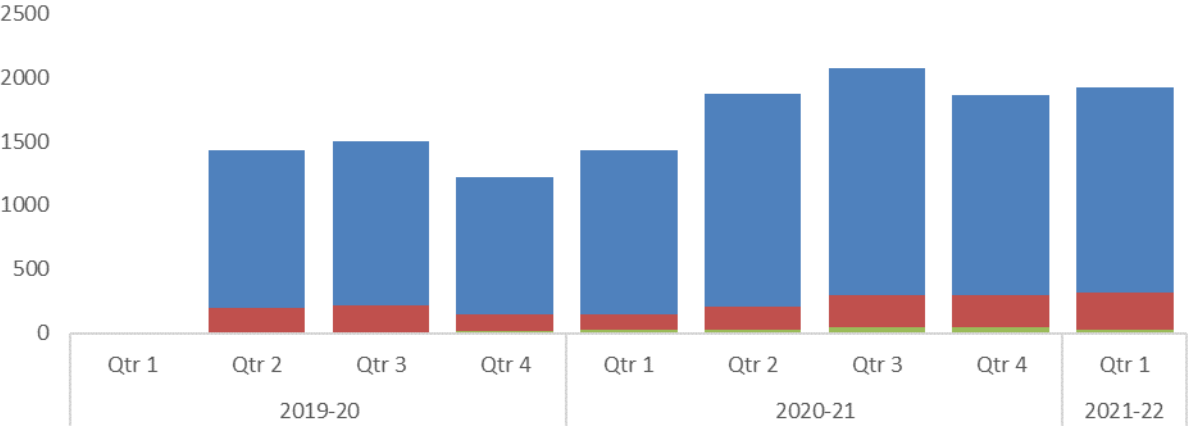
The rise in ASB is concerning and mirrors a growing crime trend especially in Public Order Offences which are closely connected to ASB. This may be due to a rebound effect after Covid restrictions.

Plans are in place to deal with this across the force. Significant Community Support Officer investment has been made by the Welsh Government and the force. Local Policing Areas are ensuring Community Support Officers are attached and aligned to crime prevention plans and the allocation model is aligned to ASB.

Released Under Investigation

Released Under Investigation (2019/20 to 2021/22 Qtr 1)

■ Up to 36m ■ Up to 24m ■ Up to 12m



Quarterly Summary

	2019-20				2020-21				2021-22
	Qtr 1	Qtr 2	Qtr 3	Qtr 4	Qtr 1	Qtr 2	Qtr 3	Qtr 4	Qtr 1
Up to 12m	n/a	1237	1280	1069	1281	1654	1774	1567	1602
Up to 24m	n/a	194	213	133	124	180	246	250	282
Up to 36m	n/a	0	2	16	26	32	47	43	32

	Qtr 1 (19-20)	Qtr 1 (20-21)	Qtr 1 (21-22)	% change (19-20)	% change (20-21)
Up to 12m	n/a	1281	1602	n/a	25.1%
Up to 24m	n/a	124	282	n/a	127.4%
Up to 36m	n/a	26	32	n/a	23.1%

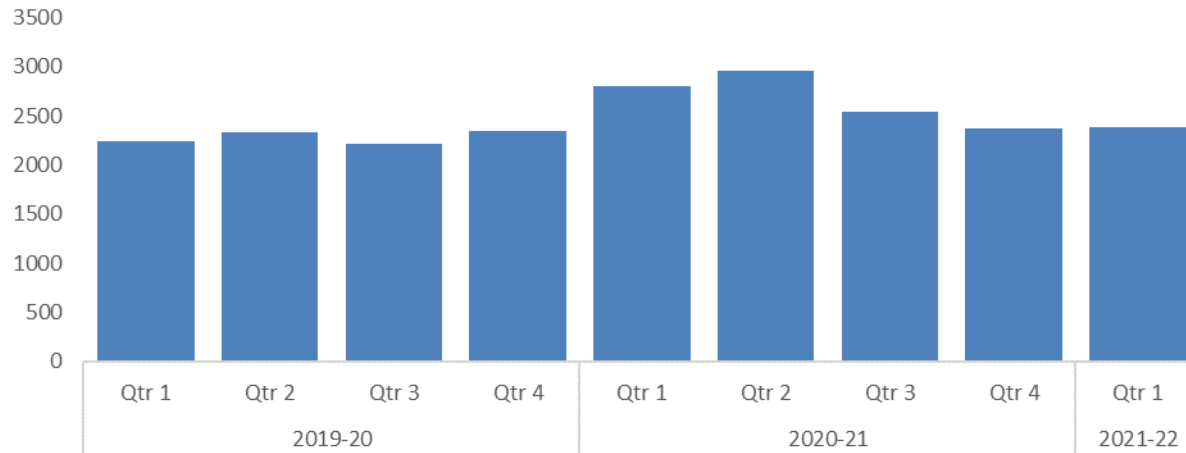
Key Points

The number of persons currently released under investigation (RUI) have increased marginally from last quarter and more significantly from quarter one 2020/21.

A review panel has been established to ensure the force is making best use of bail and RUI facilities.

Arrests

Arrests (2019/20 to 2021/22 Qtr 1)



Quarterly Summary

2019-20				2020-21				2021-22
Qtr 1	Qtr 2	Qtr 3	Qtr 4	Qtr 1	Qtr 2	Qtr 3	Qtr 4	Qtr 1
2243	2331	2213	2349	2799	2959	2538	2376	2389

Qtr 1 (19-20)	Qtr 1 (20-21)	Qtr 1 (21-22)	% change (19-20)	% change (20-21)
2243	2799	2389	6.5% ↑	-14.6% ↓

Key Points

The number of persons arrested remained relatively constant when compared to the previous quarter (up 13 offences).

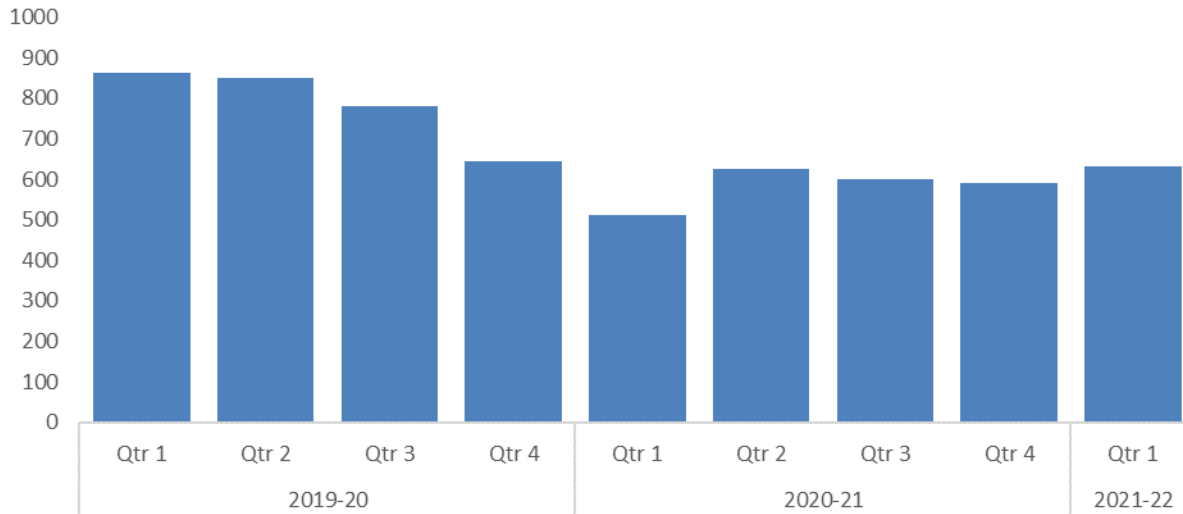
Compared to quarter one 2019/20, arrests were up by 6.5% (an additional 146 arrests).

Compared to quarter one 2020/21, arrests were down by 14.6% (410 fewer arrests). This is attributable to increased ability in the first Covid lockdown (due to less crime and ASB) to make arrests.

Plans are in place to meet agreed staffing levels within custody to ensure there is sufficient capacity to meet demand for prisoner handling.

Voluntary Attendance

Voluntary Attendance (2019/20 to 2021/22 Qtr 1)



Quarterly Summary

2019-20				2020-21				2021-22
Qtr 1	Qtr 2	Qtr 3	Qtr 4	Qtr 1	Qtr 2	Qtr 3	Qtr 4	Qtr 1
862	850	782	645	512	625	599	592	633

Qtr 1 (19-20)	Qtr 1 (20-21)	Qtr 1 (21-22)	% change (19-20)	% change (20-21)
862	512	633	-26.6% ↓	23.6% ↑

Key Points

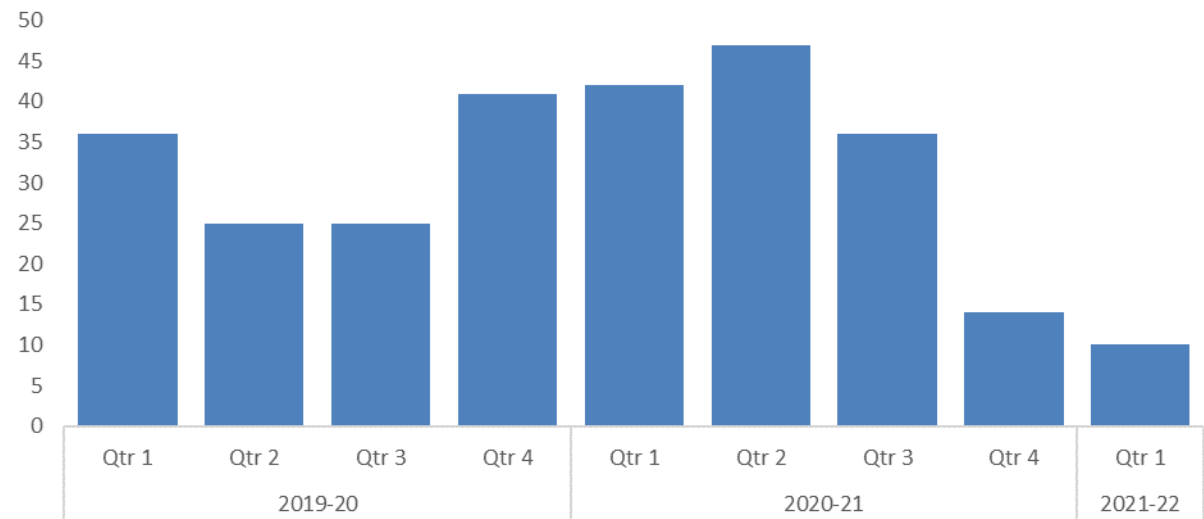
The amount of persons with voluntary attendance as a disposal type has increased slightly (6.9%, an additional 41 persons) when compared to the previous quarter.

Compared with quarter one in 2019/20, voluntary attendance fell by 26.6% (350 fewer), however compared with quarter one in 2020/21, voluntary attendance increased by 23.6% (121 additional). This may be due to more arrests and less voluntary attendees during the initial Covid lockdown of 2020/21.

There has been an increase in the number of children who are being processed by voluntary attendance rather than arrested.

Investigation Timeliness

Investigation Timeliness (2019/20 to 2021/22 Qtr 1)



Quarterly Summary

2019-20				2020-21				2021-22
Qtr 1	Qtr 2	Qtr 3	Qtr 4	Qtr 1	Qtr 2	Qtr 3	Qtr 4	Qtr 1
36	25	25	41	42	47	36	14	10

Qtr 1 (19-20)	Qtr 1 (20-21)	Qtr 1 (21-22)	% change (19-20)	% change (20-21)
36	42	10	-72.2% ↓	-76.2% ↓

Key Points

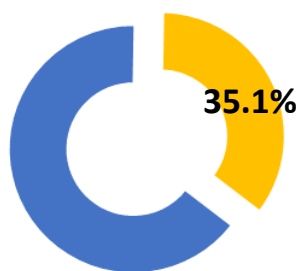
- The median number of days for completing an investigation has fallen significantly to 10 days in quarter one 2021/22. This represents a huge improvement when compared to previous quarter ones and last quarter.
- The figure shows the median of all investigations finalised during the set time period.
- In quarter 3 of 2020/21 there was a large backlog of crime occurrences (over 13,000). This figure has rapidly decreased to under 1,000. This, along with the drive to reduce historic crimes still under investigation, has led to reduced investigation length over the last two quarters.

Organisational Assessment

1. Representative workforce
2. Sickness absence

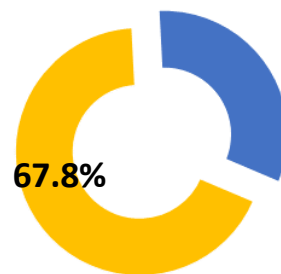
Representative Workforce

Gender - Officer



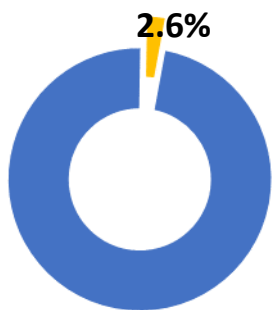
■ Female ■ Male

Gender - Staff



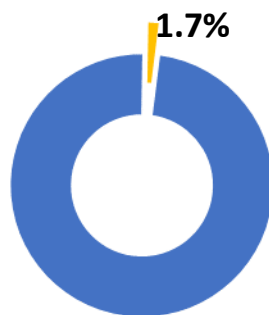
■ Female ■ Male

Minority Ethnic - Officer



■ Minority Ethnic ■ White

Minority Ethnic - Staff



■ Minority Ethnic ■ White

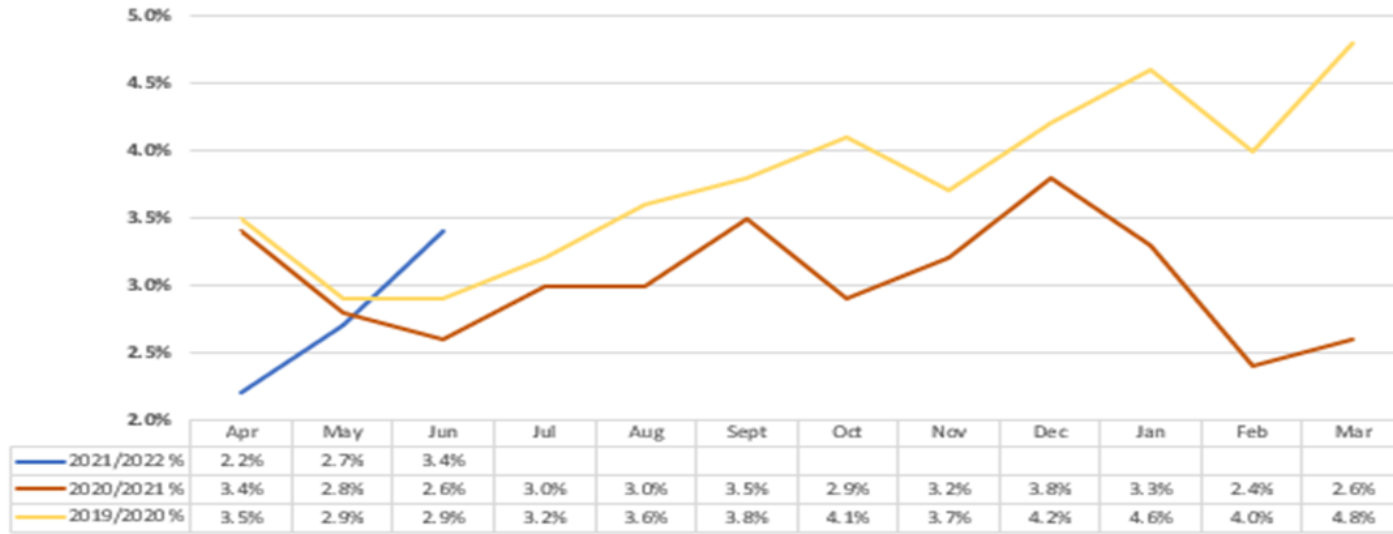
Key Points

There is a gender disparity in the workforce for both officers and staff. For officers, females are underrepresented by approximately 16 percentage points (current census data reveals that females make up 51% of the population in Gwent). However, females are overrepresented in the staff workstream area (by 16 percentage points)

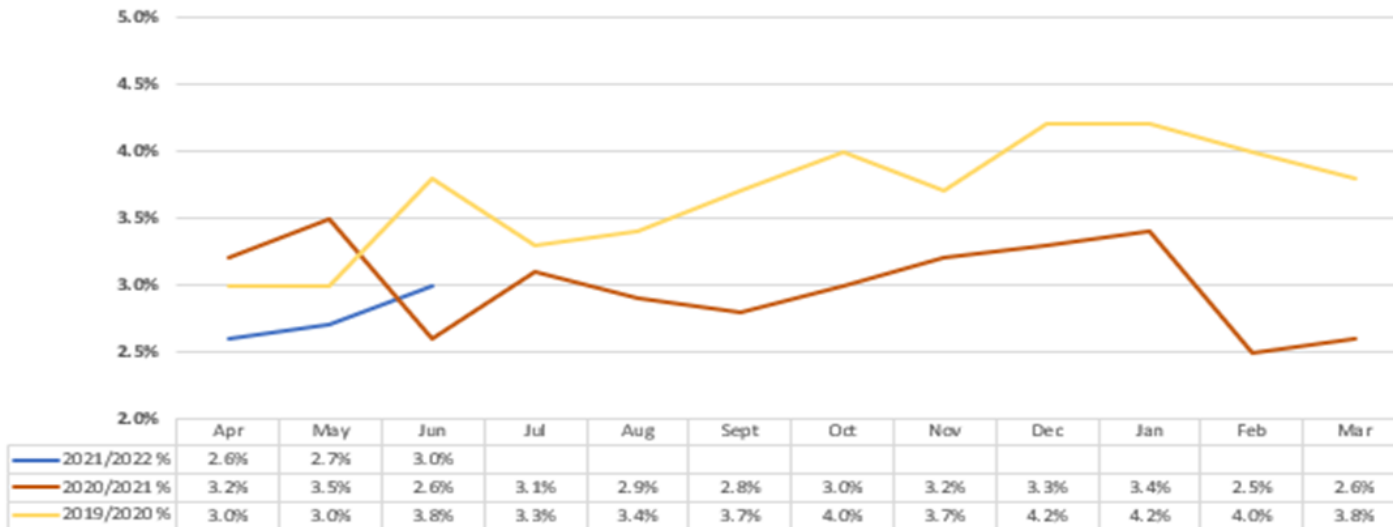
There is also disparity in the minority ethnic representation in the workforce. For police officers, currently 2.6% are persons from an ethnic minority (3.9% 2011 Census, 5.1% StatsWales). Ethnic minority representation in staff is even lower at 1.7%.

Sickness Absence

Police Officer - Percentages



Police Staff - Percentages



Key Points

Officer absence increased in June above previous years (3.4% in June, compared to 2.6% 2020/21 and 2.9% 2019/20). Prior to this officer absence was comparable with the previous two years.

Staff absence was below the previous two years in April and May but has risen above 2020/21 figure in June.

Part of the reason why officers and staff have increased rates of sickness in June is COVID-19 vaccination reaction which would not have been observed in previous years.

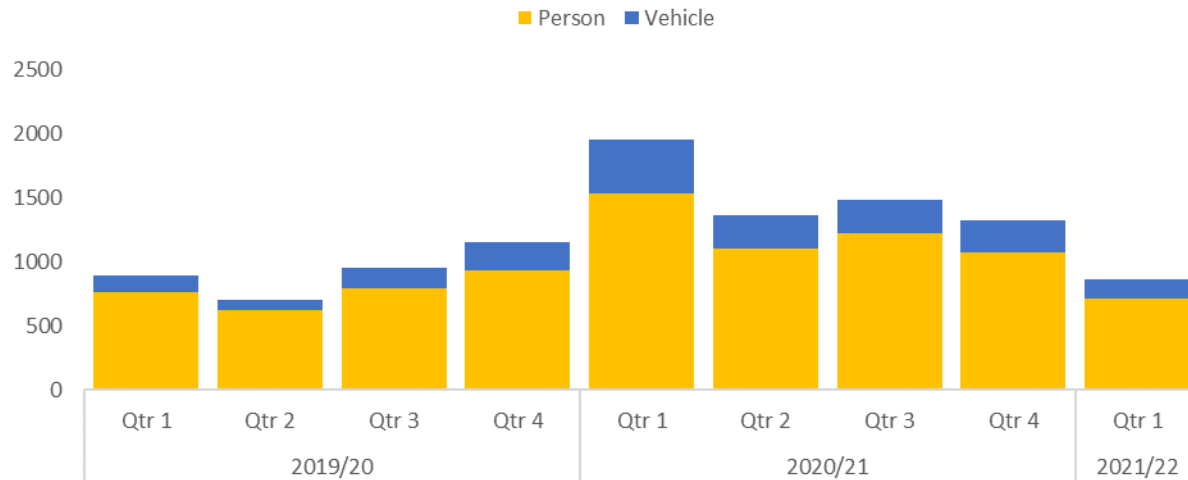
The force has invested heavily in its wellbeing provision and increased the size of the Occupational health and wellbeing team.

Service User Assessment

1. Stop and Search numbers
2. Stop and Search Race Disproportionality Rates
3. Stop and Search find rates
4. PPN submissions
5. FCS 101
6. FCS 101 Abandonment rate
7. FCS 101 Average speed of answer
8. FCS 999 demand
9. FCS 999 performance
10. Emergency and Priority call performance

Stop and Search

Stop and Search Trend (Person and Vehicle - 2019/20 to Qtr 1 2021/22)



Quarterly Summary

	2019-20				2020-21				2021-22
	Qtr 1	Qtr 2	Qtr 3	Qtr 4	Qtr 1	Qtr 2	Qtr 3	Qtr 4	Qtr 1
Person	759	619	794	929	1537	1105	1221	1076	711
Vehicle	129	85	161	224	421	257	264	248	155

	Qtr 1 (19-20)	Qtr 1 (20-21)	Qtr 1 (21-22)	% change (19-20)	% change (20-21)
Person	759	1537	711	-6.3% ↓	-53.7% ↓
Vehicle	129	421	155	20.2% ↑	-63.2% ↓

Key Points

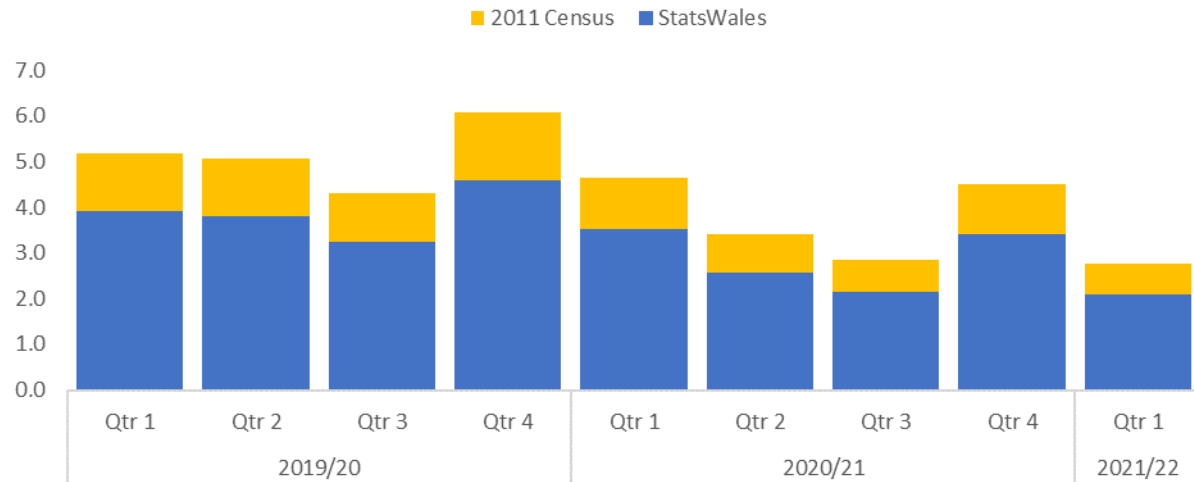
The number of person stops fell in quarter one when compared with the previous quarter and quarter one in 2019/20 (down 6.3%, 48 fewer persons) and 2020/21 (down 53.7%, 826 fewer persons).

Vehicle stops are up when compared to quarter one 2019/20 (up 20.2%, 26 additional vehicles) but down when compared to quarter one 2020/21 (down 63.2%, 266 fewer vehicles).

The decrease in stop and search activity points to more intelligence led stops throughout the force area with the Area Support Unit model being replaced by a more efficient Roads Policing and Support Operations one.

Stop and Search Race Disproportionality Rate

Stop and Search Trend (RDR- 2019/20 to Qtr 1 2021/22)



Quarterly Summary

	2019-20				2020-21				2021-22
	Qtr 1	Qtr 2	Qtr 3	Qtr 4	Qtr 1	Qtr 2	Qtr 3	Qtr 4	Qtr 1
2011 Census	5.2	5.1	4.3	6.1	4.6	3.4	2.8	4.5	2.8
StatsWales	3.9	3.8	3.2	4.6	3.5	2.6	2.2	3.4	2.1

	Qtr 1 (19-20)	Qtr 1 (20-21)	Qtr 1 (21-22)	% change (19-20)	% change (20-21)
2011 Census	5.2	4.6	2.8	-46.7% ↓	-40.8% ↓
StatsWales	3.9	3.5	2.1	-46.7% ↓	-40.8% ↓

Key Points

The RDR (race disproportionality rate) has fallen significantly during quarter one of 2021/22 when compared to previous periods.

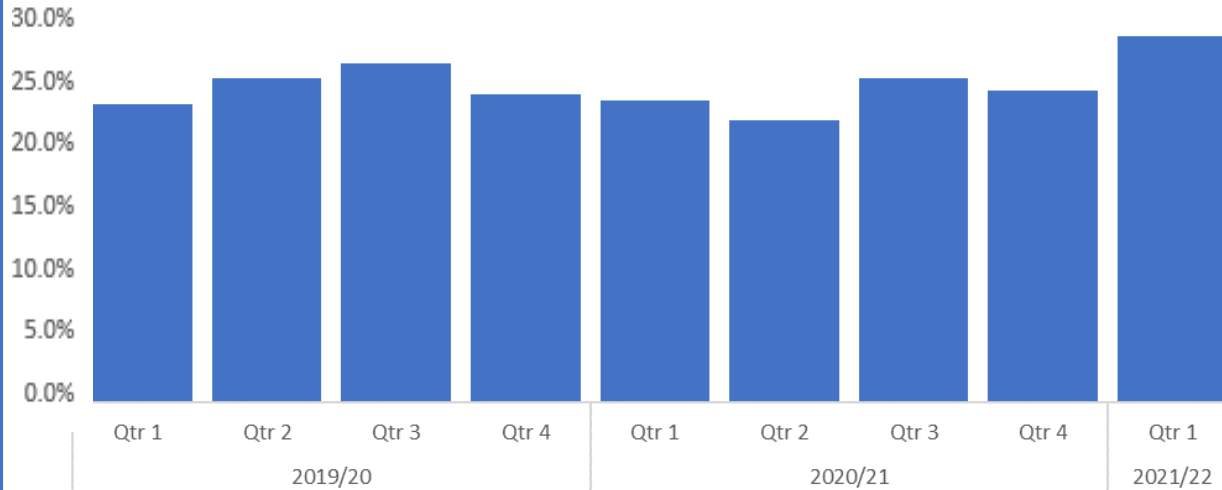
With figures taken from the 2011 census the RDR was 2.8 (meaning that Gwent Police stop persons of an ethnic minority 2.8 times more than their white counterparts)

With figures taken from latest StatsWales estimates, the RDR is 2.1

This represents a significant improvement from last quarter and quarter one in both 2019/20 and 2020/21.

Stop and Search Find rates

Stop and Search Find rates (2019/20 to Qtr 1 2021/22)



Quarterly Summary

2019-20				2020-21				2021-22
Qtr 1	Qtr 2	Qtr 3	Qtr 4	Qtr 1	Qtr 2	Qtr 3	Qtr 4	Qtr 1
23.2%	25.3%	26.4%	24.0%	23.5%	21.9%	25.3%	24.3%	28.5%

Qtr 1 (19-20)	Qtr 1 (20-21)	Qtr 1 (21-22)	% change (19-20)	% change (20-21)
23.2%	23.5%	28.5%	5.3% ↑	5.0% ↑

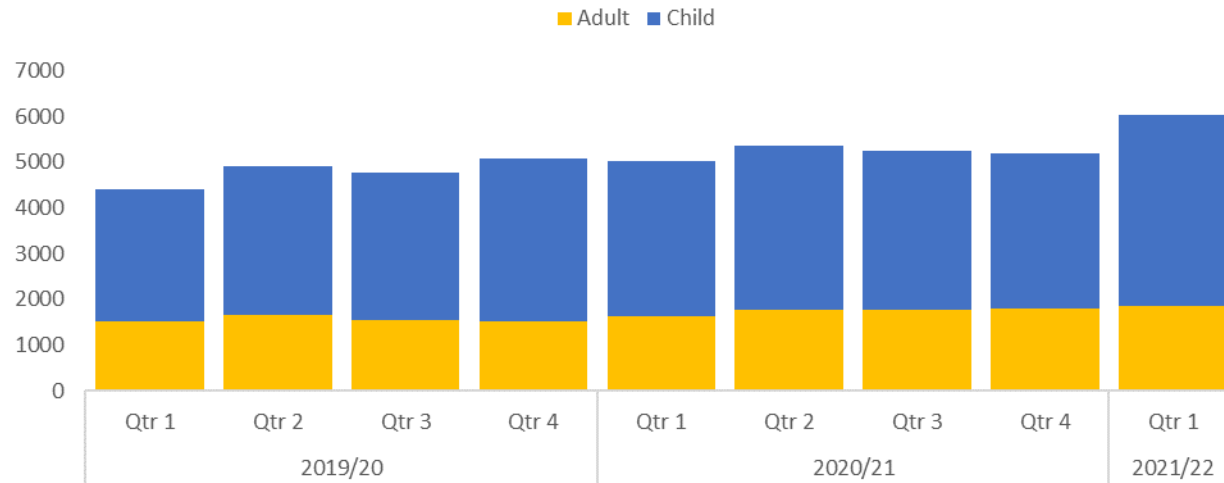
Key Points

Stop and Search find rates have increased in quarter one 2021/22 when compared to the previous quarter (up 4.2 percentage points) , quarter one in 2019/20 (up 5.3 percentage points) and quarter one in 2020/21 (up 5 percentage points).

The increase in find rates can be attributed to more intelligence led stops.

Public Protection Notice Submissions

PPN Submissions (2019/20 to Qtr 1 2021/22)



Quarterly Summary

	2019-20				2020-21				2021-22
	Qtr 1	Qtr 2	Qtr 3	Qtr 4	Qtr 1	Qtr 2	Qtr 3	Qtr 4	Qtr 1
Adult PPN	1502	1660	1548	1515	1630	1757	1774	1808	1846
Child PPN	2915	3240	3216	3566	3382	3600	3480	3381	4187

	Qtr 1 (19-20)	Qtr 1 (20-21)	Qtr 1 (21-22)	% change (19-20)	% change (20-21)
Adult PPN	1502	1630	1846	22.9% ↑	13.3% ↑
Child PPN	2915	3382	4187	43.6% ↑	23.8% ↑

Key Points

Adult and Child Public Protection Notices (PPN) have risen significantly over the course of the last two years.

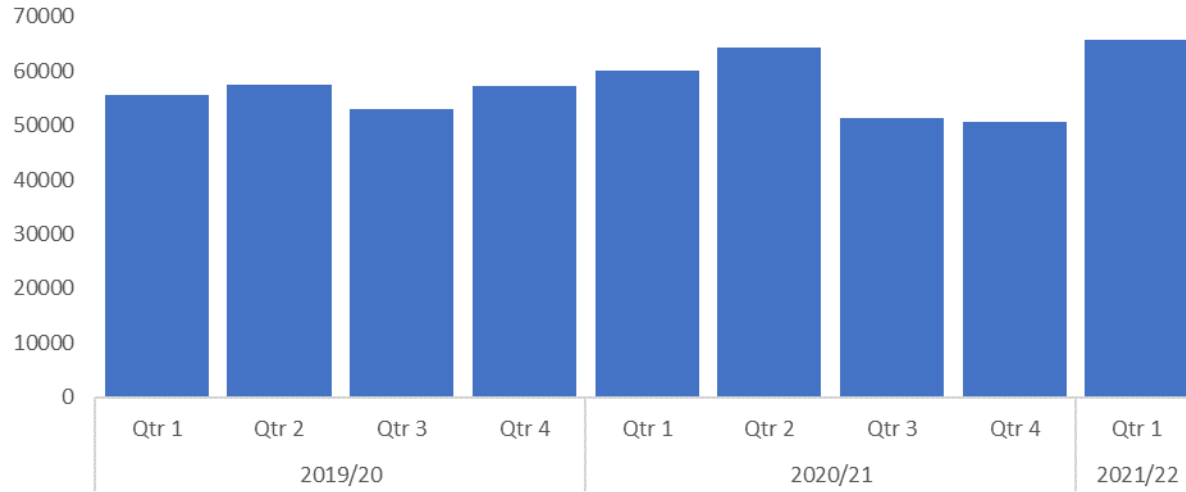
Adult PPN submissions have risen by 22.9% when compared to quarter one 2019/20 and 13.3% when compared to quarter one 2020/21.

Child PPN submissions have risen by 43.6% when compared to quarter one 2019/20 and 23.8% when compared to quarter one 2020/21.

Work is being carried out to provide better understanding of the reasons for PPN submissions and to focus activity on those at risk.

101 Demand

101 Demand (2019/20 to Qtr 1 2021/22)



Quarterly Summary

2019-20				2020-21				2021-22
Qtr 1	Qtr 2	Qtr 3	Qtr 4	Qtr 1	Qtr 2	Qtr 3	Qtr 4	Qtr 1
55489	57382	53043	57104	60054	64143	51211	50524	65679

Qtr 1 (19-20)	Qtr 1 (20-21)	Qtr 1 (21-22)	% change (19-20)	% change (20-21)
55489	60054	65679	18.4% ↑	9.4% ↑

Key Points

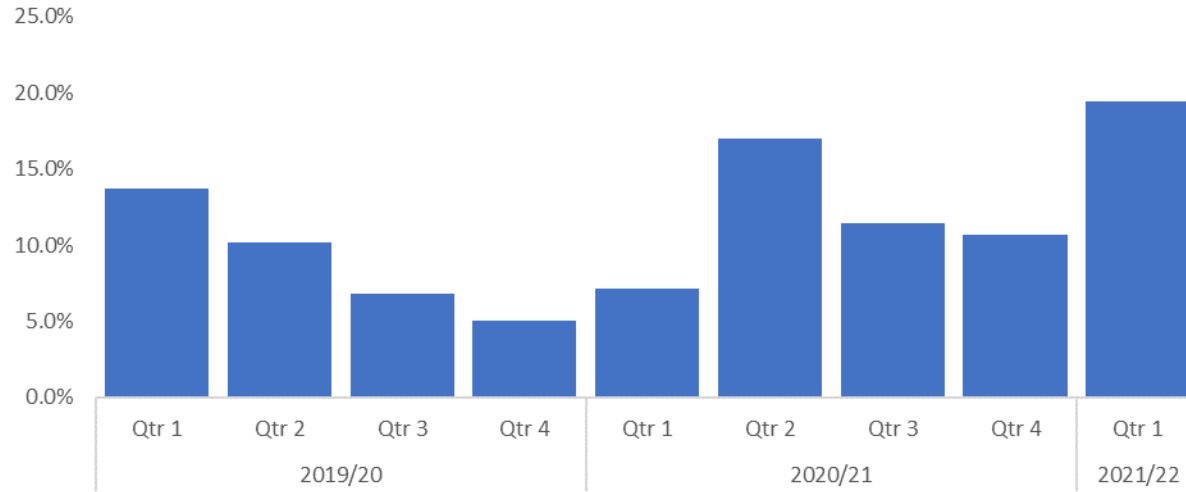
101 demand has increased significantly in quarter one of 2021/22 when compared to the previous quarter (up 30%, an additional 15,155 calls)

Demand has also risen significantly when compared to quarter one in both 2019/20 (up 18.4%, an additional 10,190 calls) and 2020/21 (up 9.4%, an additional 5,625 calls).

A multi agency group has been formed across Gwent public services to tackle the rising demands seen across all public services.

101 Abandonment Rate

101 Abandonment Rate (2019/20 to Qtr 1 2021/22)



Quarterly Summary

2019-20				2020-21				2021-22
Qtr 1	Qtr 2	Qtr 3	Qtr 4	Qtr 1	Qtr 2	Qtr 3	Qtr 4	Qtr 1
13.7%	10.2%	6.8%	5.0%	7.1%	17.0%	11.4%	10.7%	19.4%

Qtr 1 (19-20)	Qtr 1 (20-21)	Qtr 1 (21-22)	% change (19-20)	% change (20-21)
13.7%	7.1%	19.4%	5.7% ↑	12.3% ↑

Key Points

The 101 abandonment rate has increased significantly in quarter one of 2021/2022 when compared to the previous quarter (up 9.2 percentage points) and quarter one in both 2019/20 (up 5.7 percentage points) and 2020/21 (up 12.3 percentage points).

The 101 abandonment rate is directly linked to the increase in demand of 101 over the same period.

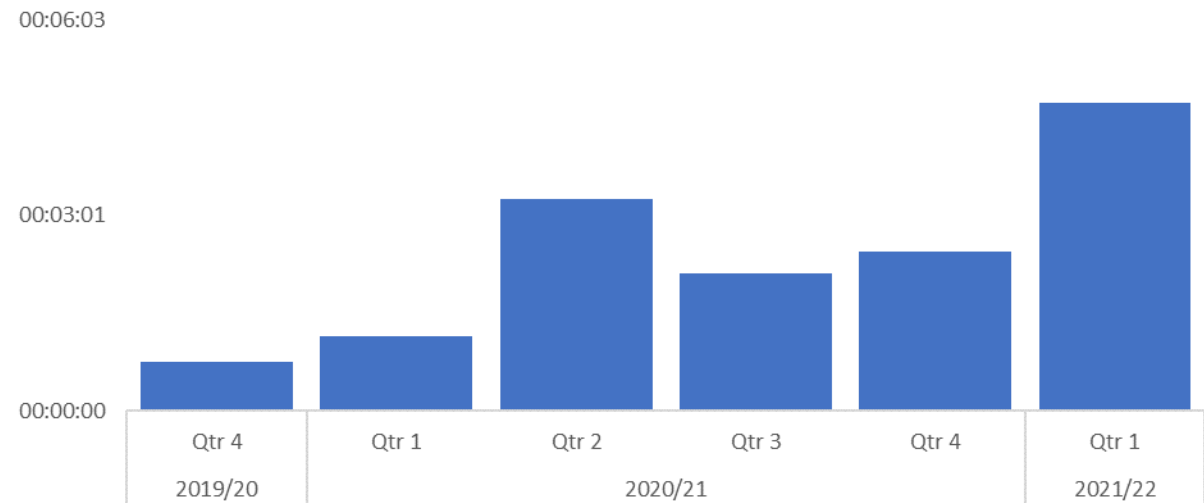
Understanding abandonment issues will have a huge impact on demand, with a certain element of abandonment being redirected in the right direction.

Dip sampling is carried out with callers who abandon calls to determine the reasons for their abandonments. .

Improvement work is being carried out by increasing the channels available to the public through the social media desk and single online home. New technologies, such as voice analytics, are also being procured.

101 average answer speed

101 average speed of answer (% Qtr 4 2019/20 to Qtr 1 2021/22)



Quarterly Summary

2019-20	2020-21				2021-22
Qtr 4	Qtr 1	Qtr 2	Qtr 3	Qtr 4	Qtr 1
00:00:46	00:01:09	00:03:17	00:02:08	00:02:28	00:04:46

Qtr 1 (19-20)	Qtr 1 (20-21)	Qtr 1 (21-22)	change (19-20)	change (20-21)
n/a	00:01:09	00:04:46	n/a	00:03:37 ↑

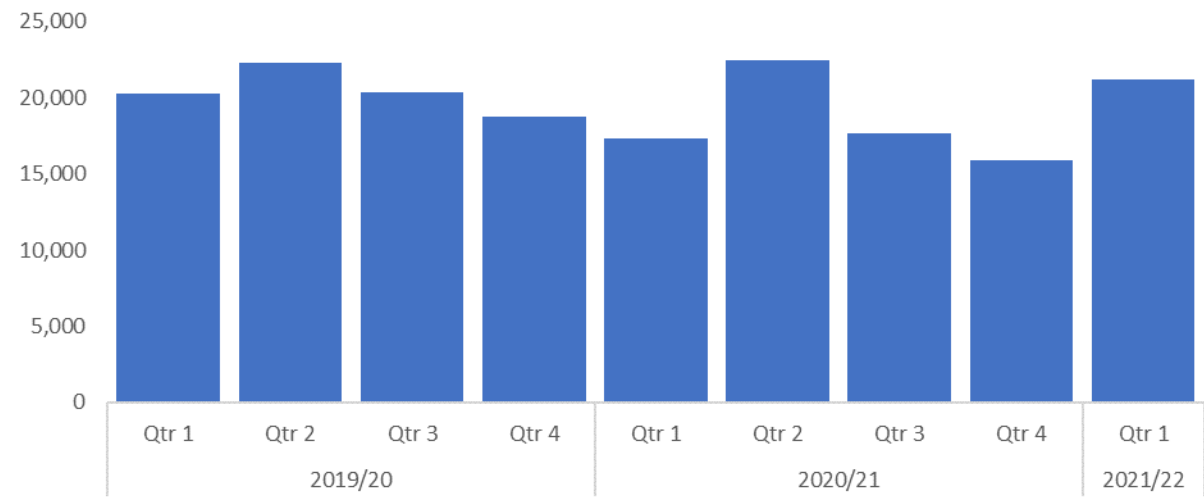
Key Points

The average speed of answer of 101 calls has risen by over 2 minutes when compared to the previous quarter. Comparisons with quarter 4 of 2019/20 and quarter 1 of 2020/21 are not applicable due to system changes and upgrades.

There is no national set time to answer with several forces re-queuing callers.

999 Demand

999 Demand (2019/20 to Qtr 1 2021/22)



Quarterly Summary

2019-20				2020-21				2021-22
Qtr 1	Qtr 2	Qtr 3	Qtr 4	Qtr 1	Qtr 2	Qtr 3	Qtr 4	Qtr 1
20234	22310	20371	18714	17319	22469	17690	15918	21207

Qtr 1 (19-20)	Qtr 1 (20-21)	Qtr 1 (21-22)	% change (19-20)	% change (20-21)
20234	17319	21207	4.8%	22.4%

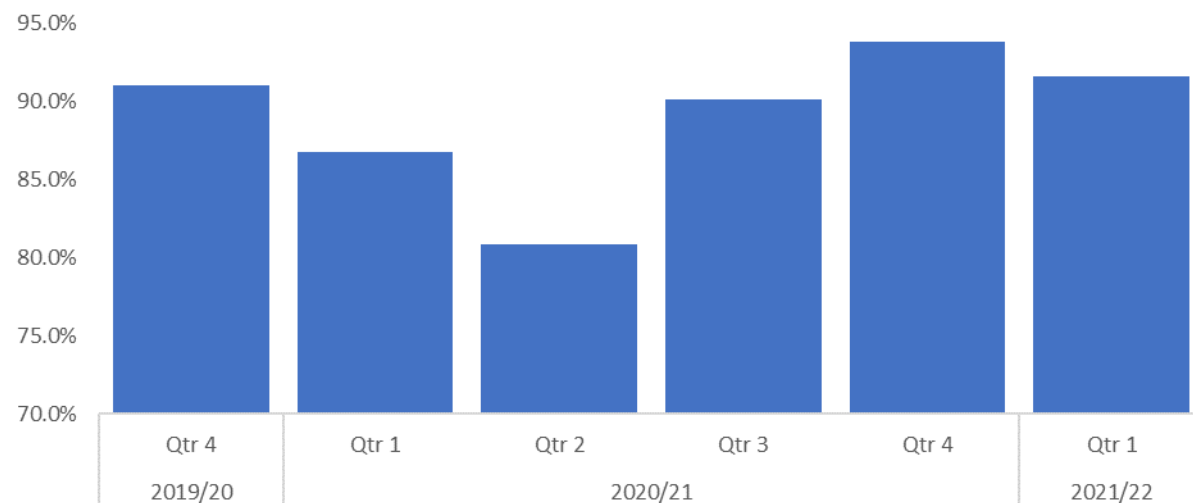
Key Points

999 demand has risen significantly when compared to the previous quarter (5,289 more calls, a rise of 33.2%) and also quarter one in both 2019/20 (4.8% increase) and 2020/21 (22.4% increase).

The increases in demands are being experienced by many public service bodies in Gwent and throughout the country. As stated, a multi agency group has been established to address the issues.

999 service level performance

999 calls answered in 10 seconds (% Qtr 4 2019/20 to Qtr 1 2021/22)

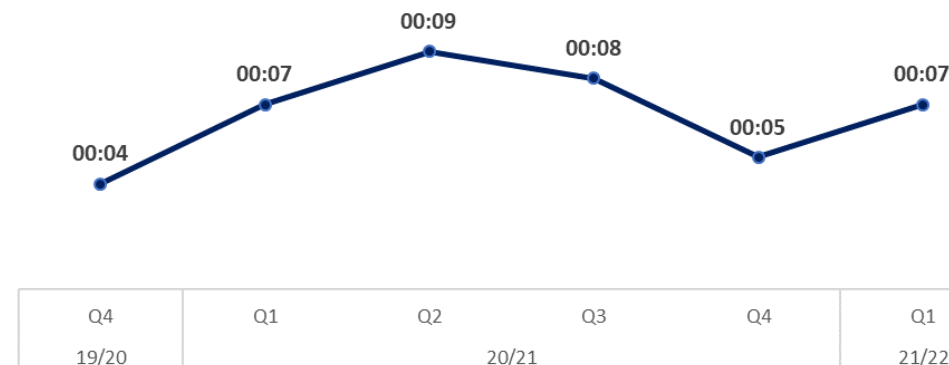


Quarterly Summary

2019-20	2020-21				2021-22
Qtr 4	Qtr 1	Qtr 2	Qtr 3	Qtr 4	Qtr 1
91.0%	86.7%	80.8%	90.1%	93.8%	91.6%

Qtr 1 (19-20)	Qtr 1 (20-21)	Qtr 1 (21-22)	% change (19-20)	% change (20-21)
n/a	86.7%	91.6%	n/a	4.9% ↑

999 Average Speed of Answer (MM:SS)



Key Points

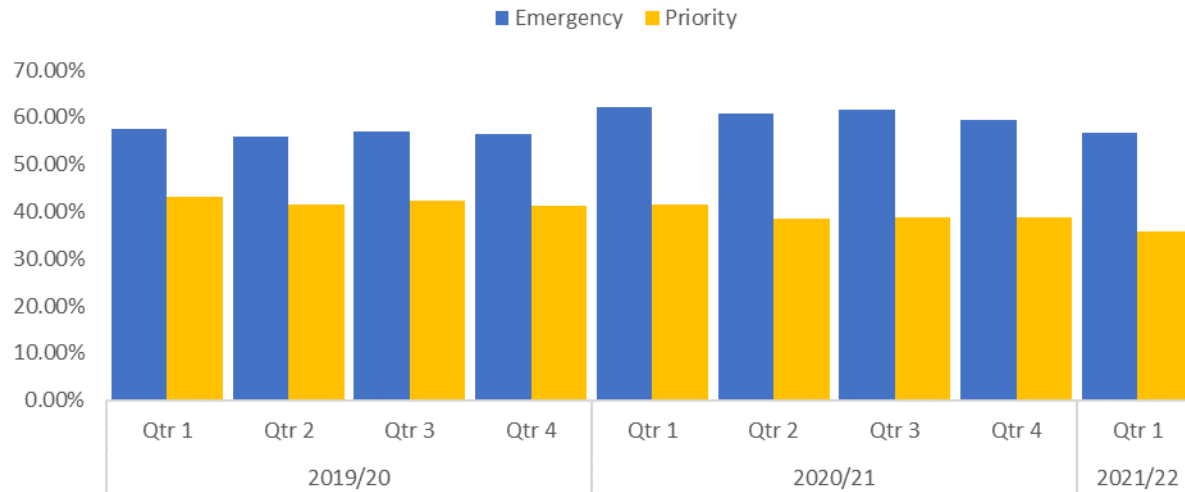
The % of 999 calls answered within 10 seconds has deteriorated when comparing quarter 1 of 2021/22 to quarter 4 of 2020/21 (by 2.2 percentage points to 91.6%)

However, performance compared to quarter 1 of 20120/21 has improved by 4.9 percentage points and remains above the 90% national benchmark.

Average speed of answer has fluctuated somewhat over previous quarters and is still below the national benchmark of 10 seconds.

Emergency and Priority call performance

Emergency and Priority call compliance % (2019/20 to Qtr 1 2021/22)



Quarterly Summary

	2019-20			2019-20	2020-21				2021-22
	Qtr 1	Qtr 2	Qtr 3	Qtr 4	Qtr 1	Qtr 2	Qtr 3	Qtr 4	Qtr 1
Emergency Call Compliance (15 mins)	57.6%	56.0%	56.9%	56.5%	62.2%	60.9%	61.6%	59.3%	56.7%
Priority Call Compliance (1 hour)	43.0%	41.4%	42.3%	41.2%	41.4%	38.4%	38.7%	38.8%	35.7%

	Qtr 1 (19-20)	Qtr 1 (20-21)	Qtr 1 (21-22)	change (19-20)	change (20-21)
Emergency Call Compliance (15 mins)	57.6%	62.2%	56.7%	-0.90% ↓	-5.50% ↓
Priority Call Compliance (1 hour)	43.0%	41.4%	35.7%	-7.30% ↓	-5.70% ↓

Key Points

Emergency call compliance (% attended within 15 minutes) has remained relatively stable over the previous quarters.

Priority call compliance (% attended within 1 hour) shows signs of deterioration over the previous quarters. Quarter 1 of 2021/22 returned a compliance figure of 35.7% which is the lowest compliance rate over the last two years.

It has been identified that whereas other forces have 4 or more levels of incident grading, Gwent Police have 3. The force is reviewing its approach to grading of incidents as a result.