

A typical day in GWENT POLICE



Incoming demand

Officers will make approximately **25 ARRESTS**, 2 of which will identify as **Violence with injury**.



Approximately **237** 999 calls are received.



Officers will issue **2** Cautions, **1** Penalty Notice for Disorder and **1** cannabis warning

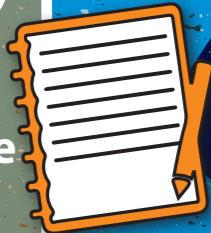


Officers will deal with (amongst other crimes)

7 dwelling burglaries,
21 thefts,
5 thefts from a motor vehicle,
2 thefts of a motor vehicle,
40 violent crimes,
1 robbery, and
3 sexual assaults.



Approximately **497** incidents are recorded.



Approximately **156** crimes are reported.



We come to work to **protect and reassure**

As well as dealing with crime, officers will:

Respond to **43 Domestic Abuse incidents**, of which 26 were recorded as a crime.

Carry out **10 stop and searches**, 7 of these are drugs related. Of these 7 stop and searches, less than 1 will result in an arrest.

Deal with **30 Anti-Social Behaviour incidents**.

Attend **3 injury road traffic collisions** where breath tests are administered.

Respond to approximately **12 missing person reports**, each of which will take an average of 9.5 hours of police time.

Respond to approximately **29 incidents** flagged as being associated with people with **mental health issues**.

Outgoing demand

In addition to reacting to calls for service from the public, Gwent Police will also be undertaking proactive work to safeguard the public including:

Taking part in approximately **200 Child Protection strategy** discussions per month.



Taking part in approximately **76 Vulnerable Adult** strategy discussions per month.



Supporting approximately **5 victims of domestic abuse** per day through the Domestic Abuse Conference Calls and Multi-Agency Risk Assessment Conferences.



There are currently **528 Police Staff** supporting the front line operational delivery.



Up to **16000** miles are driven each day by Gwent Police vehicles.

Vision and values

- ✓ Be compassionate
- ✓ Be courageous
- ✓ Be proud
- ✓ Be positive
- ✓ Keep learning

In March 2020, the estimated population of Gwent was 594,164. There are currently **1,323 Gwent Police Officers**, meaning there is one Police Officer for every 449 members of the public. There are approximately **136 Community Support Officers** covering the Gwent area.